

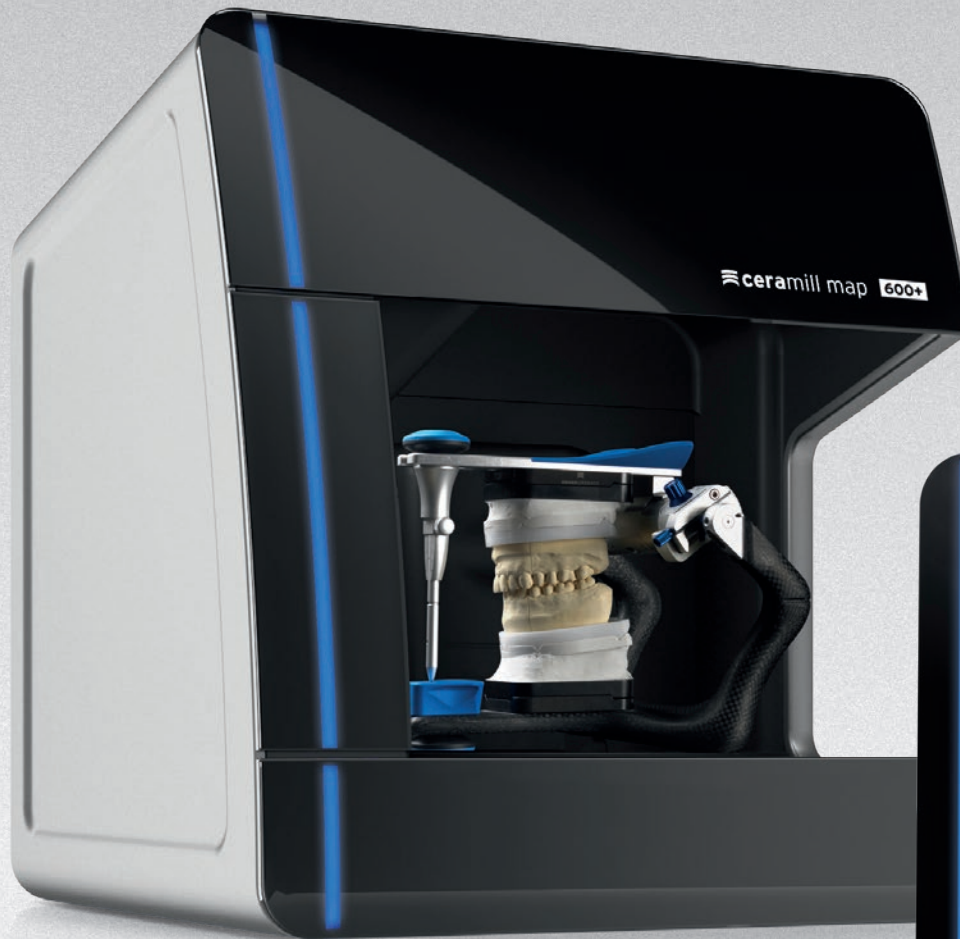
SPEED OF LIGHT.  
ARTEX PRECISION.

# **ceramill<sup>®</sup> map**



READY  
FOR  
**AG.LIVE**

THE INHOUSE MOVEMENT<sup>®</sup>



## WHICH CERAMILL MAP IS THE BEST ONE FOR YOU?

### ceramill® map 600+

FOR PROFESSIONALS  
EFFICIENT, INTELLIGENT, PRECISE

**Dimensions** D/W/H 415/424/469 mm  
**Weight** 25 kg  
**scanning accuracy** 4 µm  
**Full jaw scan** in 18 sec.

### ceramill® map 200+

FOR NEWCOMERS  
COMFORTABLE, FAST, COMPACT

**Dimensions** D/W/H 390/360/310 mm  
**Weight** 11kg  
**scanning accuracy** 6 µm  
**Full jaw scan** in 20 sec.

## THE FULLY AUTOMATIC HIGH-PERFORMANCE SCANNER FOR OPEN ARTICULATOR SCANNING

The new Ceramill Map 600+ high-performance scanner from the DNA generation offers intelligence, efficiency and maximum precision.

The scanner features an integrated universal carrier plate for all common types of articulator, which saves time-consuming plate changes. Due to Splitex integration, all the accessory components of the Map portfolio can be used.

The intelligent scan height control automatically moves the object to be scanned into the best possible scan area, thus offering the user increased process reliability, maximum convenience and protection against incorrect use. The new drive technology with an automatic Z-axis ensures ultra-precise and fast travel movement.

The highly sensitive industrial 3D sensor with Blue Light technology ensures outstanding depth of field and a scanning accuracy of 4µm.

The Ceramill Map 600+ generates open STL or PLY data.



**\_Integrated, universal fixator for all common types of articulators ensures maximum flexibility**

**\_Intelligent scan height control for optimum model alignment in the scan field offers the highest possible process reliability**

**\_The Ultra HD industrial camera with 3D sensor and blue-light technology ensures a very high scanning resolution and highly reproducible results**

**\_Speed-up Matching enables workflows that are up to 50% faster and minimal waiting times in the laboratory**

**\_DNA Speed Scanning enables a full jaw scan with unrestrictedly usable results in only 18 seconds**

## EFFICIENT, INTELLIGENT, PRECISE

### **Open housing design**

designed according to dental requirements for easy operation and highest scanning precision at the same time

### **One-piece interior**

for easy cleaning of the interior while protecting sensitive components

### **High-Definition 3D Sensor**

with blue light technology, variable resolution and integrated stray light cover for best results

### **Automatic scan height control**

Automatic positioning of the scan object in the ideal measuring field range

### **Integrated multifunctional articulator fixator**

for best possible scanning quality with all common articulators

### **Splitex plate**

for Map accessory components

### **Quick access key**

for simple operation directly on the device





## ARTICULATOR SCAN MAXIMUM EFFICIENCY

To utilize the advantages of the virtual articulator, a 1:1 conversion of the model situation is required from the real articulator into a data set. The Ceramill Map 600+ enables scanning articulated models directly in the articulator without prior transfer to a transfer station. During the scanning process, the model is transferred from the actual articulator to the software while retaining the axis relation. A wide variety of articulator types can be positioned and precisely scanned without any additional accessories on the integrated multifunctional support plate. This offers the user maximum convenience and speed.

- \_Maximum precision through condyle-related scanning in the Artex workflow**
- \_Convenient and time-saving handling without any accessory components**
- \_Maximum precision due to ideally arranged scanning field**

## THE ROUTE TO THE PERFECT FIT



The articulated model in the Artex CR is placed directly in the Map 600.

The Artex scanner transfers the model directly from the actual articulator into the software while maintaining the axis relation.

The virtual Artex CR with unlimited functionality.



## NEW INDUSTRIAL CAMERA MAXIMUM PRECISION

The new Ultra HD camera with 3.2 MP guarantees a perfect and high-quality scanning result. Only perfect 1:1 conversion of the model situation from analog to digital can guarantee a perfect restoration. Special attention was paid to error-free and precise conversion of the critical margin areas to achieve accuracy and satisfy the high demands. The increased calculation effort due to the increased transfer of data can be almost completely compensated for by a new premium PC, which can speed up the calculation process by up to 20% and therefore hardly affects scanning times.

- \_The higher resolution of the 3.2 MP industrial camera achieves perfect 1:1 conversion of the model situation and therefore results in a better quality of the restoration**
- \_Improvements are particularly evident in the critical marginal area**
- \_Meets the high demands for accuracy and reproducibility**
- \_In combination with the new Premium PC, the scanning process can be accelerated by up to 20%**

## ENTRY-LEVEL SCANNER - COMPACT, PRECISE, QUICK

Ceramill Map 200+ is a fully automatic 2-axis stripe-light scanner, ideal for entry into CAD/CAM technology due to its uncomplicated handling with simultaneous high precision. It is also suitable for all users who want to produce cost-effective, precise scan data. Equipped with newly developed DNA speed scanning strategies and high-resolution 3D sensors it shares the same standards of precision and speed with the bigger version Ceramill Map 600+. In combination with the automatic user guidance Ceramill Map 200+ brings together convenience and precision on a compact footprint of 390x360x310 mm. Ceramill Map 200+ has an open interface, so that scans (STL files) can also be loaded in other CAD programmes.

- \_Maximum precision with a minimum footprint
- \_DNA speed scanning reduces scan times by up to 50%
- \_Open interface and automatic user guidance

Equipped with the new features, Amann Girrbach sets new standards for the entry-level Map 200+ scanner, and guarantees even better scanning accuracy as well as increased scanning speed, which opens the way for countless new applications.

**New scanner GUI delivers excellent DESIGN**

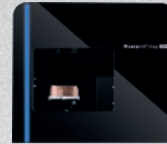
**SPEED-UP MATCHING promises faster MATCHING**




**Free scanning sequence promises flexible WORKFLOW**

**and the articulation promises even more intelligent ARTICULATION**, which for the first time allows the software to assign the jaws in the correct position without the need for a vestibular scan.



## ALL FUNCTIONS AT A GLANCE

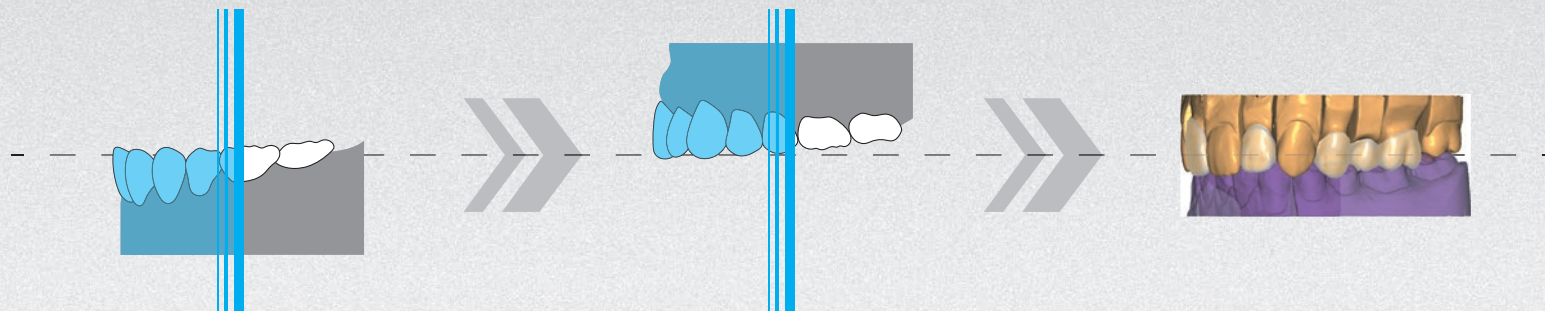


	FUNCTION	ceramill® map 200+	ceramill® map 600+
 INTELLIGENT	Multi-Die	<input type="radio"/>	<input type="radio"/>
	Intelligent Multi-Die	<input type="radio"/>	<input type="radio"/>
	Texture and Color Scan	<input type="radio"/>	<input type="radio"/>
	Universal Scan	<input type="radio"/>	<input type="radio"/>
	Free scanning sequence	<input type="radio"/>	<input type="radio"/>
	Auto-Articulation	<input type="radio"/>	<input type="radio"/>
	All-In-Scan		<input type="radio"/>
 PRECISE	Optical autofocus (automatic positioning of model)		<input type="radio"/>
	Blue-Light-Technologie		<input type="radio"/>
	HD-Scan		<input type="radio"/>
 EFFICIENT	Impression Scan / Triple Tray / Full arch	<input type="radio"/>	<input type="radio"/>
	Splitex-Integration	<input type="radio"/>	<input type="radio"/>
	Open scannen	<input type="radio"/>	<input type="radio"/>
	DNA Speed Scanning	<input type="radio"/>	<input type="radio"/>
	Articulator-Scan		<input type="radio"/>
	Fixator Scan		<input type="radio"/>
	DNA High Speed matching	<input type="radio"/>	<input type="radio"/>



## AUTO-ARTICULATION MAXIMUM INTELLIGENCE

Industry 4.0 comes to dental laboratories. The new intelligent software algorithm automatically assigns the upper and lower jaws, thereby eliminating the vestibular scan and thus 33% of the manual steps in the laboratory. The software upgrade thus not only reduces the manual / physical activities of an employee, but as a result also optimizes the entire laboratory workflow. While the computer is performing the employee's work, the employee can devote time to more important tasks, thereby increasing turnaround times and enabling more profit to be generated during the same amount of time. The feature promises maximum savings in time and maximum convenience for the scanning process in all indications. In addition, the new function allows absolute autonomy with regard to the use of articulators. The precise positioning data for articulation are transmitted to the computer in conjunction with the facebow and the transfer stand, so that the exact position of the upper and lower jaw can be determined and assigned in the usual condylar-related manner.



- \_Maximum time savings and maximum comfort - manual interruption to the lab workflow is virtually a thing of the past**
- \_No vestibular scan necessary**
- \_Work proceeds more quickly by reducing the physical activities of an employee during the scanning process**
- \_Passive waiting time (matching) can be used to perform other work - this can optimize the workflow in the laboratory**
- \_Absolute autonomy with regard to the use of articulators**
- \_Due to Artex - scanning process is condylar-related as accustomed**
- \_Accurate and reliable results due to high-precision software algorithm**





## FREE SCANNING SEQUENCE MAXIMUM INTELLIGENCE

The „free scanning sequence“ feature offers staff in dental laboratories the option of determining for themselves when which scanning process is to be performed. Depending on the initial situation, the most suitable scanning step can be brought forward without having to make unnecessary modifications to the model. This not only provides more convenience for the user, but also allows arranging work far more flexibly with a reduced workload, letting employees to better organize themselves and thus the entire scanning workflow.

**\_Convenient and flexible work organization**

**\_Reduced workload**

**\_Higher degree of self-organization**



## SPEED-UP MATCHING MAXIMUM EFFICIENCY

The new, more efficient calculation algorithm accelerates matching time by up to 35%, depending on the indication. This reduces the active waiting time of a scanning process by up to 25 seconds.

**\_Faster calculation algorithms**

**\_Significantly improved overall scanning time**

**\_Depending on the indication, between 15% and 38% faster**



## NEUE SCANNER GUI MAXIMUM EFFICIENCY

The user interface is derived from the design of Ceramill Mind. This brings the advantages of a clear and user-friendly display that makes working with the software faster and more comfortable. Adaptation of the software interface to the new Ceramill Mind design.

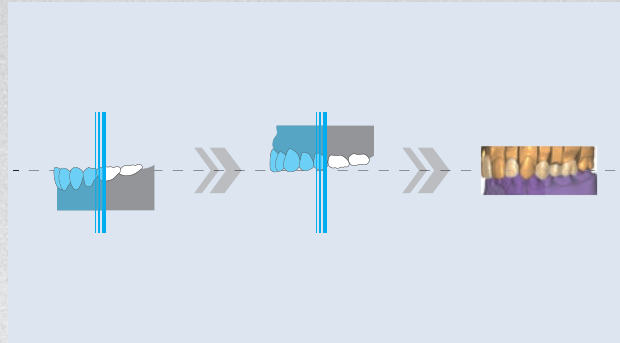
## FULLY AUTOMATED WORKFLOWS AND NEW INTELLIGENT FEATURES

## IMPRESSION SCAN



- \_ Fully automated workflow for scanning impressions
- \_ No manual intervention necessary
- \_ Easy handling

## AUTO-ARTICULATION



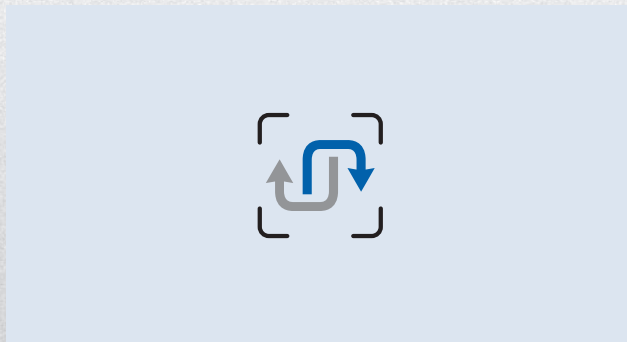
- \_ Automatic allocation of upper and lower jaws without an additional vestibular scan
- \_ Maximum time savings and maximum comfort—manual interruption to the lab workflow is almost entirely a thing of the past

## INTELLIGENT MULTI DIE - UP TO 12 STUMPS



- \_ Scanning of up to 12 stumps
- \_ In only two scanning steps to the perfect result
- \_ Automatic alignment of the stumps in the model
- \_ Maximum time savings

## FREE SCANNING SEQUENCE



- \_ Enables situation-dependent and flexible working
- \_ Positively impacts working comfort and rhythm

## ALL-IN



**i** ONLY FOR  
MAP 600+

- \_ Digitization of a quadrant model in just two scanning steps
- \_ automatic alignment of up to 3 single stumps

## AUTOFOCUS OPTICAL



**i** ONLY FOR  
MAP 600+

- \_ Positioning of the model in the optimal measuring field
- \_ Highest application safety through intelligent scan height control
- \_ The best precision per indication

## ORDERING INFORMATION

### Ceramill Map 200+

179130NC Ceramill Map 200+

### Ceramill Map 600+

179560 Ceramill Map 600+ (incl. Scan Accessories)

#### 179561 Scan Accessories:

179135 All-In Bar

179137 M-Die

179118 Universal model socket

179119 Fixation pins



179121 Calibration model

179123 Putty

179116 Fixing compound



## TECHNICAL DATA

	 ceramill® map 200+	 ceramill® map 600+
Dimensions D/W/H (mm)	390 x 360 x 310	415 x 424 x 469
Weight	11 kg	25 kg
Electrical connected value	100-240 V, 50/60 Hz	100-240 V, 50/60 Hz
Electrical fuse	T 2 x 1,25A	T 2 x 1,6A
Output(W)	80	60
Accuracy (µm) according to DIN EN ISO 12836:2013-01	6	4
Accuracy (µm) implant bars	10	10
Axes	2	3
Recommended installation site	Table, no direct sunlight	Table, no direct sunlight
Full arch scan (sec.)	20	18
Single die with Ceramill Multi Cap (sec.)	4,5	4,5



**AMANNGIRRBACH**

**AUSTRIA (HEADQUARTERS)**

Amann Girrbach AG  
Koblach, Austria  
Fon +43 5523 62333-105  
austria@amanngirrbach.com

**GERMANY**

Amann Girrbach GmbH  
Pforzheim, Germany  
Fon +49 7231 957-100  
germany@amanngirrbach.com

**ITALY**

Amann Girrbach Italia srl  
Verona, Italy  
Fon +39 045 9813970  
europe@amanngirrbach.com

**FRANCE**

Amann Girrbach France SAS  
Jossigny, France  
Fon +43 5523 62333-105  
europe@amanngirrbach.com

**NORTH AMERICA**

Amann Girrbach North America, LP  
Charlotte, NC, U.S.A.  
Fon +1 704 837 1404  
america@amanngirrbach.com

**BRASIL**

Amann Girrbach Brasil LTDA  
Curitiba, Brasil  
Fon +55 41 3287 0897  
brasil@amanngirrbach.com

**ASIA**

Amann Girrbach Asia PTE LTD.  
Singapore, Asia  
Fon +65 6592 5190  
singapore@amanngirrbach.com

**CHINA**

Amann Girrbach China Co., Ltd.  
Beijing, China  
Fon +86 10 8886 6064  
china@amanngirrbach.com

[WWW.AMANNGIRRBACH.COM](http://WWW.AMANNGIRRBACH.COM)