

Presentation of the system



Prosthesis fixation
and restoration of narrow single tooth gaps

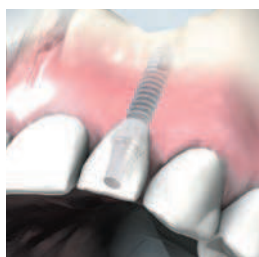
Indications and patient selection

2



Prosthesis fixation

With miniSKY, bredent medical offers an implant that is reduced in diameter and perfectly suited to prosthesis fixation due to its technical properties.



Restoration of narrow single tooth gaps

mini²SKY is perfectly suited to restoration of narrow single tooth gaps. In the case of low bone availability and despite residual dentition, patients can be treated with a highly-aesthetic solution for the edentulous space.

Here are your indications for miniSKY

Dentition	Often long edentulous or inconvenient residual dentition not worth saving.
Available bone	Often severely atrophied jaw. Treatment with standard implants cannot be carried out or can only be carried out by means of augmentation.
Prosthesis	Unsteady, mucosa-supported full prosthesis. Pressure points and areas of inflammation present.
General health	Prevents any complex surgical procedures under anaesthesia.
Financial resources	Limited. Treatment with standard implants and costly bone enhancements are not possible for reasons of cost.
Ease of cleaning	Only possible to a limited extent, – therefore simple handling required.
Nutrition	Chewing of firm food is difficult. Significant anxiety that the prosthesis will fall out.
Quality of life	Low self-confidence. Often also resulting in psychological problems.

The basic principle – the miniSKY implant system

- Implant and surface design
- At a glance - the SKY implant family
- Clinical indications
- Surgical protocol

Prosthetic options for prosthesis fixation with

- SKY O-ring housing or SKY precious metal matrix for mini¹SKY
- mini²SKY retention.loc
- mini²SKY TiSi.snap with retention.sil – the economical alternative
- CAD/CAM manufactured bars – directly screwed

Restoration of narrow single tooth gaps

- Standard abutments
- Individual abutments – analogue and digital

Impression and model manufacturing

Instrument kit and component overview

The basic principle – the miniSKY implant system

4

Implantatdesign und Oberflächengestaltung

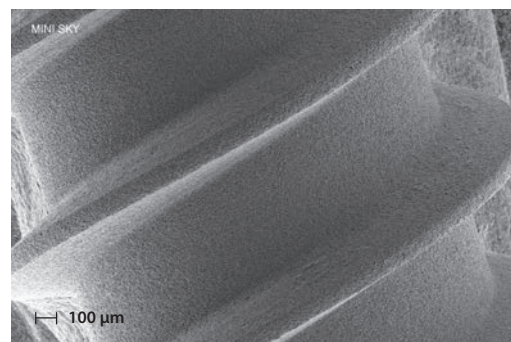
mini¹
SKY ✦



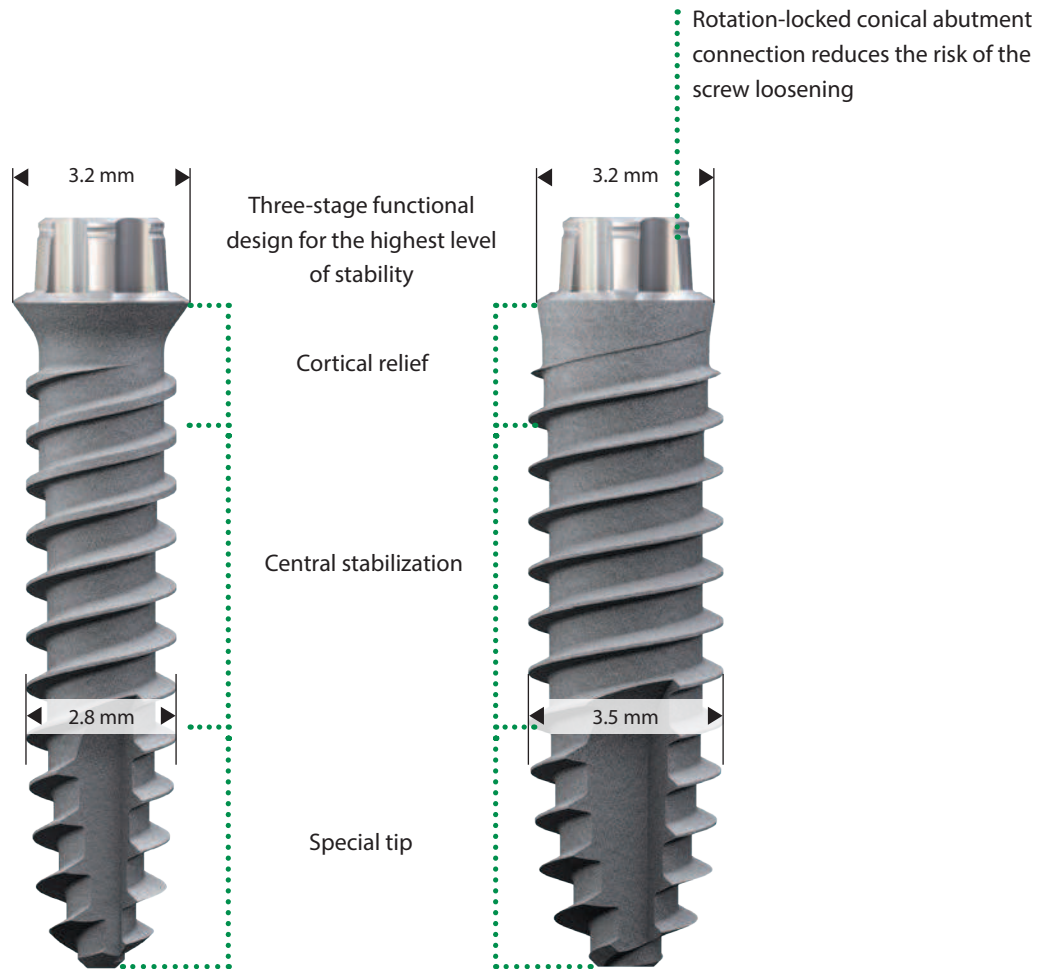
osseo connect surface (ocs)[®]

The mini¹SKY and mini²SKY implants have the tried-and-tested *osseo-connect surface (ocs)*[®] of the blueSKY implants, which ensures optimal osseointegration.

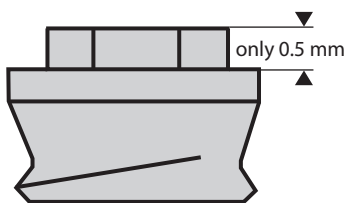
The uniform coarse surface provides ideal prerequisites for the accumulation of the osteoblasts. This is supported by the excellent hydrophilic properties of the implants.



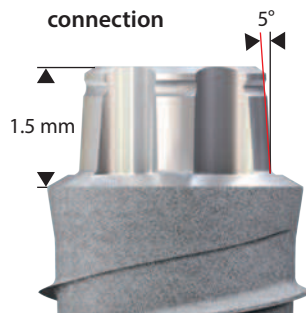
mini²
SKY



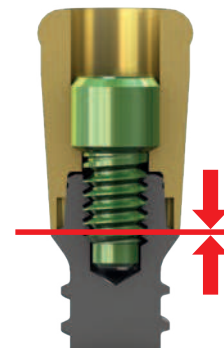
Competing implant abutment connection



mini²SKY implant abutment connection



- High implant abutment connection
- Minimal movement due to 5° cone
- Exceptional stability



Definitive positioning of the abutment

The basic principle – the miniSKY implant system

6

At a glance - the SKY implant family



miniSKY - the narrowest member of the SKY family

Are you interested in additional implant treatments?

SKY System Presentation brochure REF 000250GB

Tissue Related Implant Management brochure REF 009913GB

Prerequisites for successful treatment with miniSKY

- ✓ No residual dentition in the opposing jaw
- ✓ Adequate primary stability (30 Ncm)
- ✓ Avoidance of primary contacts
- ✓ No overdimensioning of the prosthesis
- ✓ Maintenance of the healing phase



Restored immediately using retention.sil

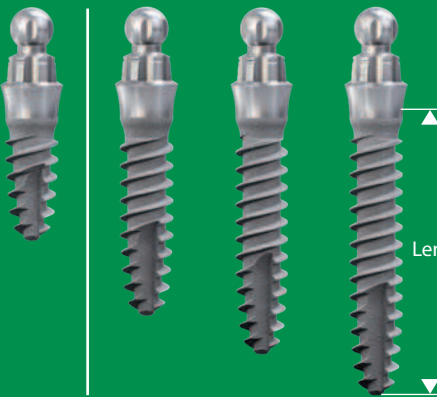
Immaterial whether stud, retention.loc or TiSi.snap.

With retention.sil, bredent medical offers a unique prosthesis silicone which can be used to softly line the prosthesis for the duration of the healing phase.

This lining cushions the chewing forces and absorbs the load peaks. As a result, successful healing is ensured.

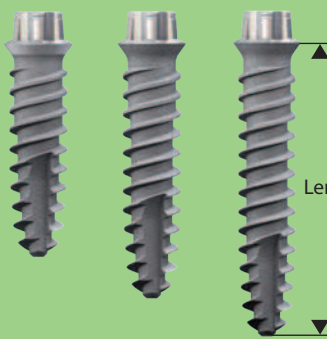
mini1SKY

- Temporary implant
- Fixation of templates



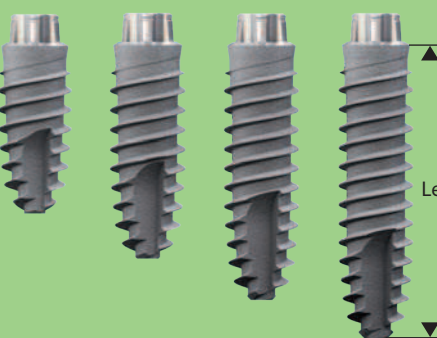
Length 6 mm	REF m1SKYL06
Length 10 mm	REF m1SKYL10
Length 12 mm	REF m1SKYL12
Length 14 mm	REF m1SKYL14

mini2SKY 2.8



Length 10 mm	REF m2SKYL10
Length 12 mm	REF m2SKYL12
Length 14 mm	REF m2SKYL14

mini2SKY 3.2


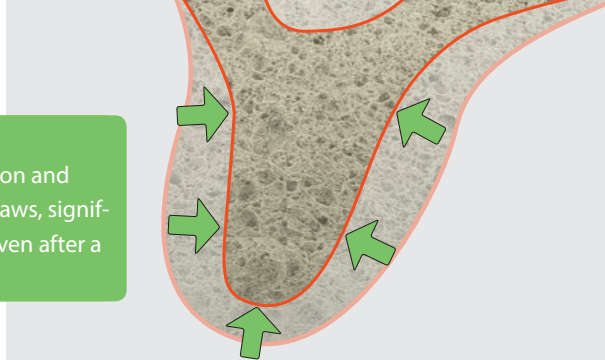
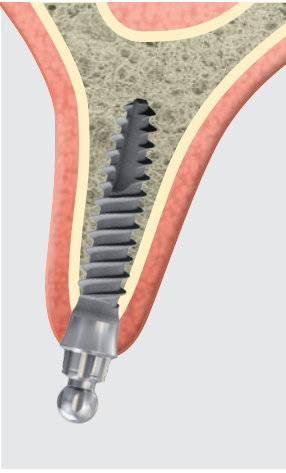
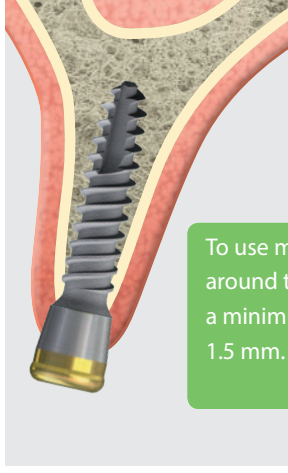
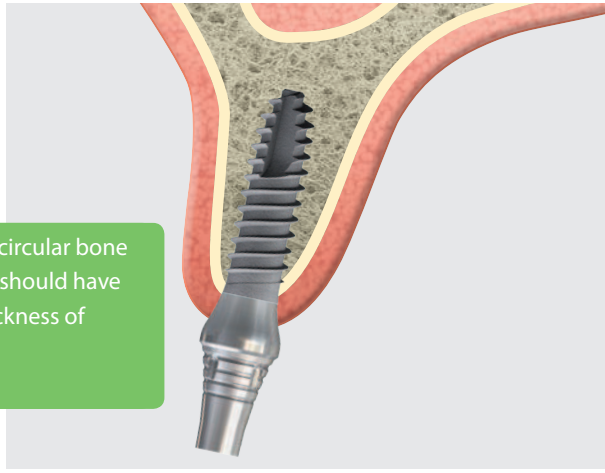


Length 8 mm	REF m2SK3208
Length 10 mm	REF m2SK3210
Length 12 mm	REF m2SK3212
Length 14 mm	REF m2SK3214



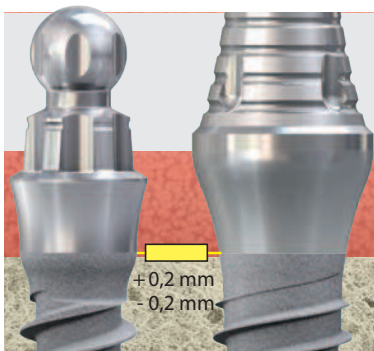
The basic principle – the miniSKY implant system

Clinical indications

Use of miniSKY with Ø 2.8 mm		Use of miniSKY with Ø 3.2 mm	
			
<p>Initial situation Following tooth extraction and unloaded (edentulous) jaws, significant bone loss occurs even after a short period of time.</p>			
			
<p>To use miniSKY, the circular bone around the implant should have a minimum wall thickness of 1.5 mm.</p>			
mini¹SKY 2.8	mini²SKY 2.8	mini²SKY 3.2	

miniSKY, with its two implant diameters, offers increased stability in comparison to “real” mini implants with a diameter of only 1.8 mm, for example.

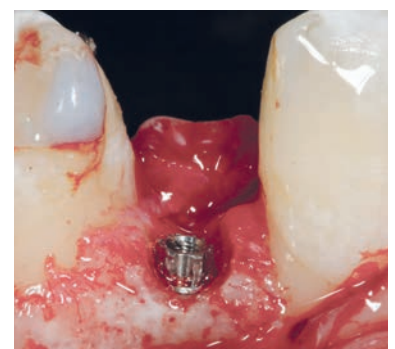
Implant and surface design facilitate adequate levels of primary stability – the prerequisite for a secure prosthetic hold.



Implant position in retention in the bone.



Dr. Michael Weiss, Ulm



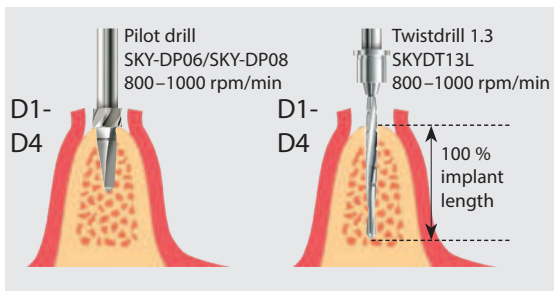
Dr. Giovanni Ghirlanda, Rome

The miniSKY implant is inserted into the bone in the iso-crestal position. Augmentations can frequently be avoided due to the narrow diameter. Visualisation of the osseous

situation by means of miniflaps is recommended for implant insertion. Often, only one surgical procedure is required, which can be carried out as a minimally-invasive procedure.

Surgical protocol

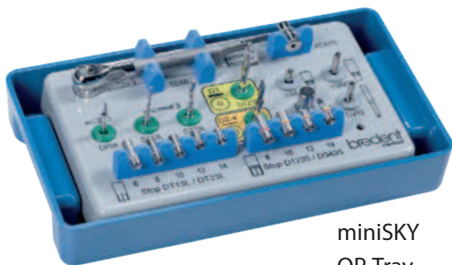
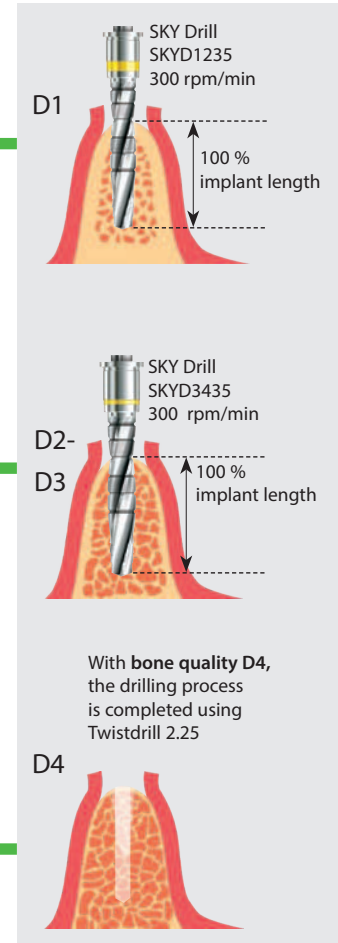
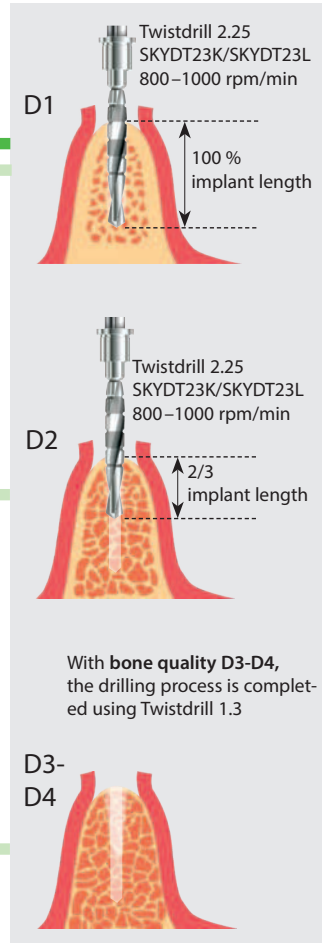
mini
SKY
IMPLANT SYSTEM



mini¹
SKY 2.8

mini²
SKY 2.8

mini²
SKY 3.2



miniSKY
OP-Tray
REF mSKYOT41

The miniSKY OP-Tray OT41, contains all of the drills and instruments needed for inserting the miniSKY implants.

If you already have a SKY OP-Tray 100 Basic and miniSKY Upgrade Kit, you will also be able to use this with no restriction.

Both OP trays are easy to clean and sterilise. Owing to its small dimensions, it also fits on any operating table.

Upgrade Kits for the new SKY OP-Tray 100 Basic

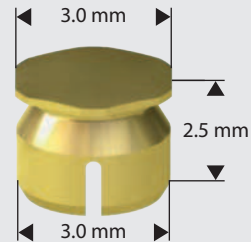
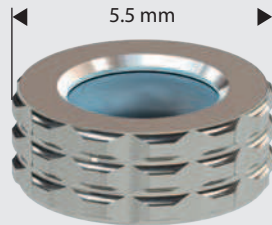
- ① **copaSKY Upgrade Kit**
Drills and instrumentns REF COPAUPGK
- ② **miniSKY Upgrade Kit**
Drills and instrumentns REF mSKYUPGK
- ③ **whiteSKY Upgrade Kit**
Instruments REF wSKYUPGK
- ④ **Torque Wrench Pro Upgrade Kit**
Instruments REF TWreUPGK



SKY OP-Tray 100 Basic
REF SKYOT10B

Prosthetic options for prosthesis fixation with...

...SKY O-ring housing or SKY precious metal matrix for mini¹SKY

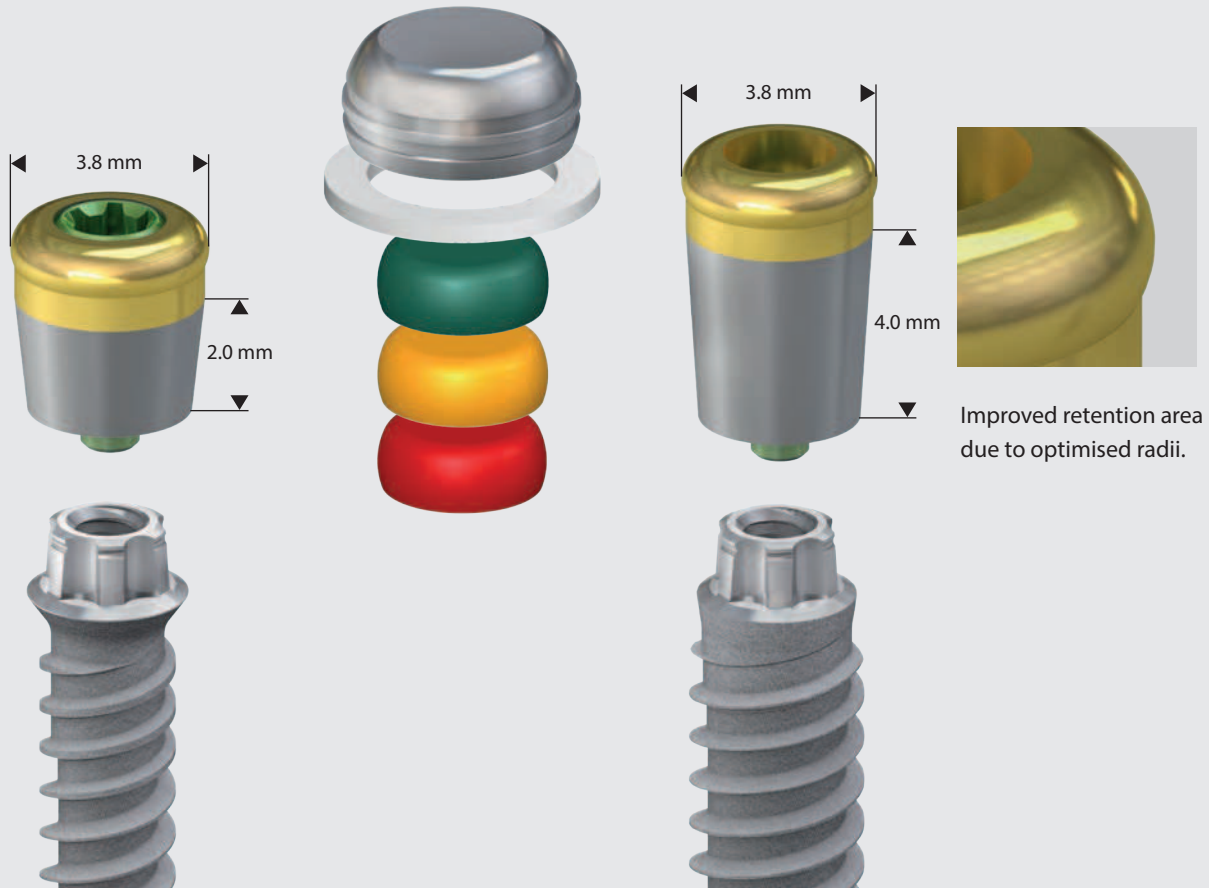


- The classic in prosthetic fixation
- Tried-and-tested in practice
- Alternatively, also with precious metal matrix with adjustable retention



REF	SKY-OR50	SKYGM225	SKY-OR55
Description	SKY metal housing with O ring	SKY Precious metal matrix	SKY O-rings
Pieces	1	1	6
Material	Stainless steel	Precious metal (Elitor)	Fluororubber
Platform	mini ¹ SKY	mini ¹ SKY	mini ¹ SKY

...mini²SKY retention.loc



Prosthesis fixation

- The solution for fixation of dentures from breident medical
- Available in 2 and 4 mm heights
- Rotation protection prevents loosening of the screw
- Fixation with mini²SKY retention screw ensures optimal application of force via the precision torx in the implant
- Original Locator[®] retention protection 20° can be used



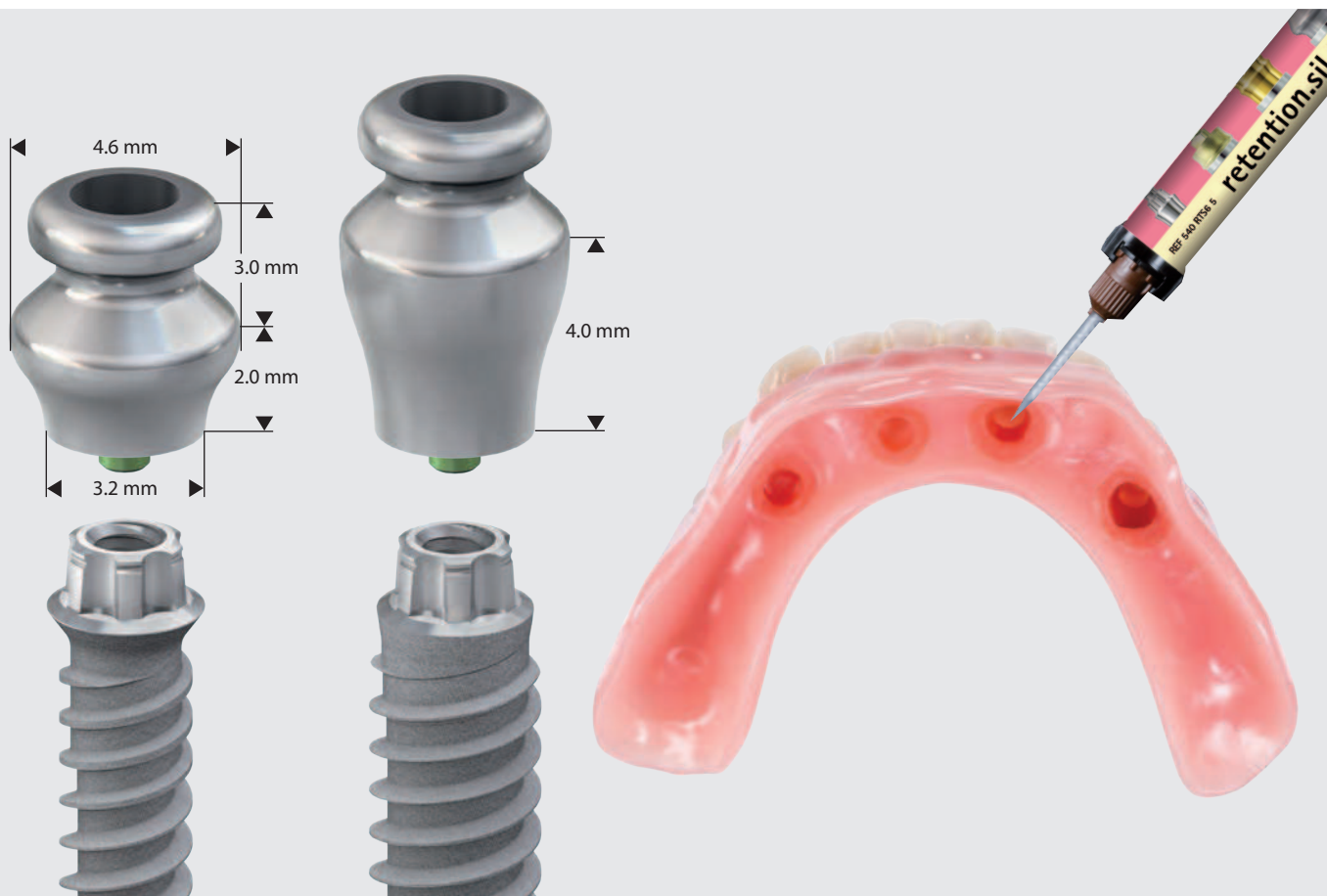
REF	m25KYRL2	m25KYRL4	m25KYS22	LOCLAB20
Description	mini ² SKY retention.loc Abutment 2 mm	mini ² SKY retention.loc Abutment 4 mm	mini ² SKY screw M 1.6	Locator [®] Processing set 10°-20°
Pieces	1	1	6	2 sets red - 4.4 N - 454 g orange - 9.1 N - 907 g green - 17.8 N - 1815 g
Material	Ti*with titanium nitride coating	Ti*with titanium nitride coating	Ti*	Titanium/Teflon/Nylo
Platform	mini ² SKY	mini ² SKY	mini ² SKY	mini ² SKY
Prosthetic key	SKY-SD 25	SKY-SD 25	SKY-SD 25	-
Torque / Ncm	20	20	-	-
Screw	incl.	incl.	-	-

Ti*=
Grade 5 titanium



Prosthetic options for prosthesis fixation with...

...mini²SKY TiSi.snap with retention.sil – the economical alternative



- The hold of the prosthesis is guaranteed with retention.sil prosthesis silicone
- Friction can be selected individually in 3 hardness grades
- Resilient restoration with a high level of wearing comfort

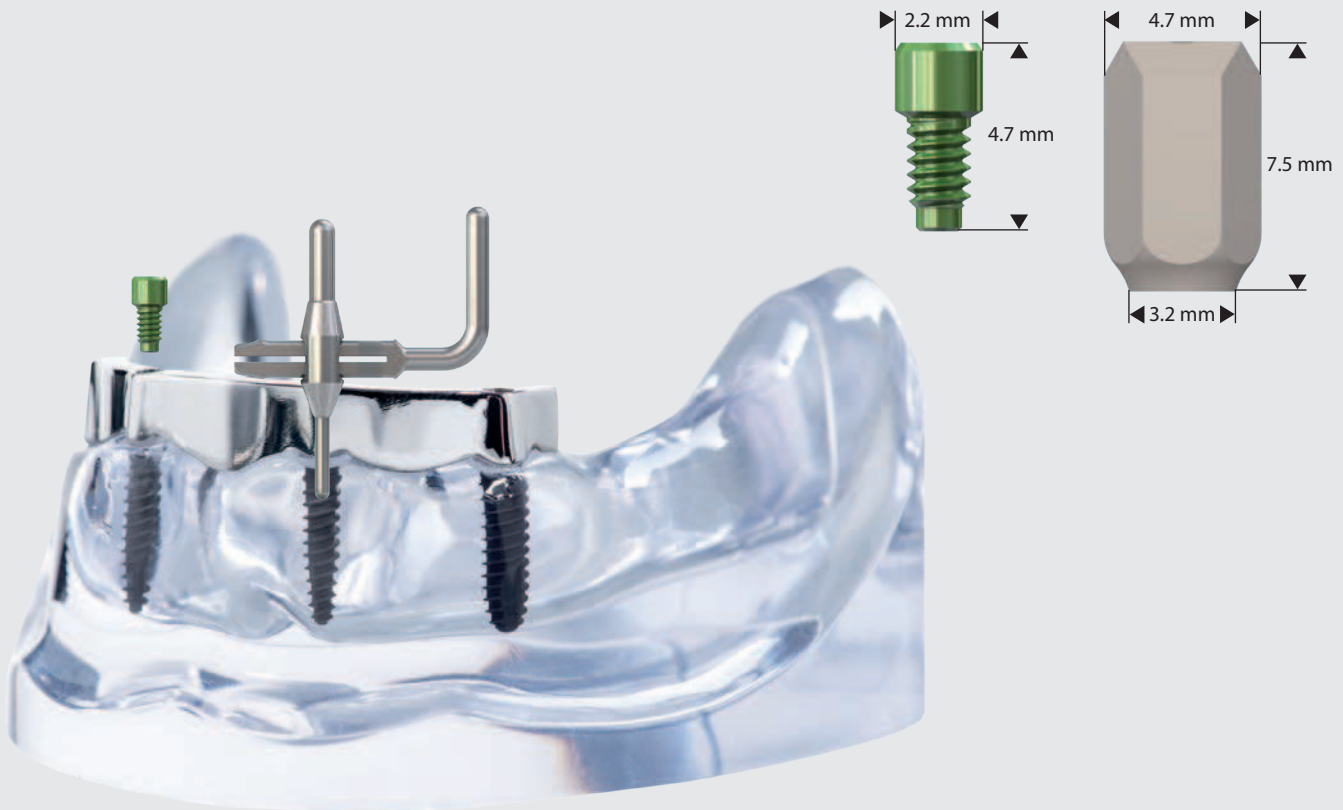
- Low costs for patients
- Existing prosthesis can be reused
- The TiSi.snap abutments are compatible with the Locator® matrices



REF	m2SKTI02	m2SKTI04	SKY-DR41	580RTS25	580RTS50	580RTS65	52001004	580RTSET
Description	mini ² SKY TiSi. snap 2 mm	mini ² SKY TiSi. snap 4 mm	SKY Bone Bur	retention.sil 200 Shore hardness 25 SH Pull-off forces 200 g/2 Newton	retention.sil 400 Shore hardness 50 SH Pull-off forces 400 g/4 Newton	retention.sil 600 Shore hardness 65 SH Pull-off forces 600 g/6 Newton	Multisil-Primer	retention.sil set contains retention.sil in 3 hardnesses in the double mixing cartridge + Multisil-Primer
Pieces	1	1	1	1	1	1	1	
Height / mm	2.0	4.0	-	-	-	-	-	
Head-Ø / mm	-	-	4.0	-	-	-	-	
Material	Ti*	Ti*	Stainless steel	Prosthetic silicone	Prosthetic silicone	Prosthetic silicone	-	
Platform	mini ² SKY	mini ² SKY	-	-	-	-	-	
Screw	incl.	incl.	-	-	-	-	-	
Prosthetic key	SKY-SD 25	SKY-SD 25	-	-	-	-	-	
Torque / Ncm	20	20	-	-	-	-	-	

Ti*= Grade 4 titanium

...CAD/CAM manufactured bars – directly screwed



Prosthesis fixation

- mini²SKY with high-quality bar solution
- Direct screwing with implants and original mini²SKY screws
- The parallelization tool is unique helping to place the implants straight (max. 8 ° angulation) to each other. The parallel insertion of the implants is necessary to direct screw the bar construction without tensions.

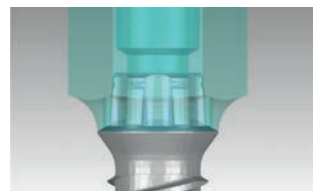
CAD-Bibliothek

The data necessary for CAD/CAM manufactured planning and manufacture can be found on www.caelo-dental.net. or on breident-medical.com. For this, you can choose the mini²SKY scan abutment and the connector geometry of the mini²SKY implant. As a high level of precision is presupposed in the manufacturing due to the screw position in the bar, we recommend cooperation with various reference milling centres. Please see our separate offers for this.



REF	m2SKSCIE	m2SKYS22	mSKYpara
Description	mini ² SKY Scan-Abutment intraoral / extraoral	mini ² SKY Screw M 1.6	mini ² SKY 0° parallelization tool
Pieces	1	6	1
Height / mm	7.5	4.7	-
Material	Peek-Classix™	Ti*	Stainless steel
Platform	mini ² SKY	mini ² SKY	mini ¹ SKY, mini ² SKY
Screw	incl.	-	-
Prosthetic key	SKY-SD 25	SKY-SD 25	-
Torque / Ncm	10	-	-

Ti*= Grade 5 titanium



Restoration of narrow single tooth gaps

Standard abutments



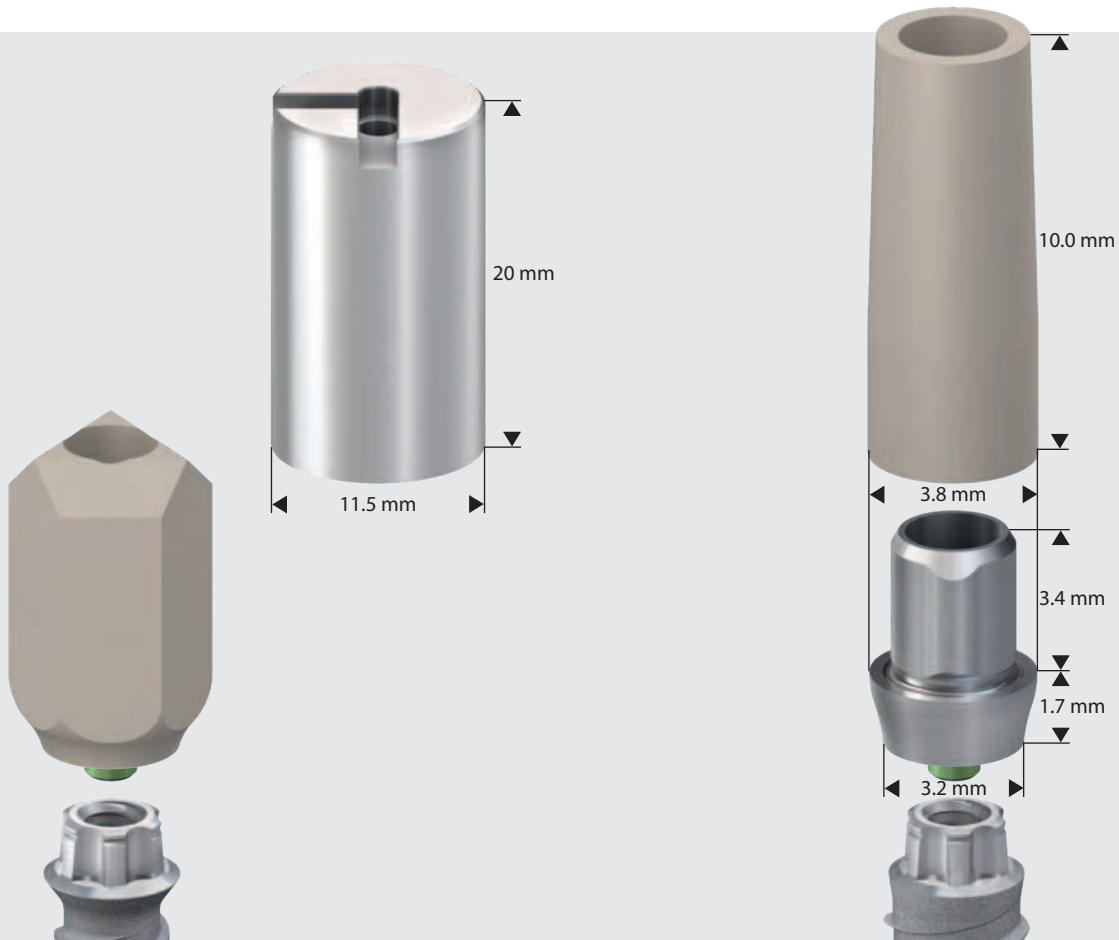
- Precision torx ensures optimal load application of abutments in the implant
- Loosening of screws is avoided
- Available in titanium or BioXS versions

- The mini²SKY MD abutments (Multi-Divergence) enable divergence balancing simply by shortening with no time-consuming grinding
- The prosthetic copings facilitate modelling of the bridge restoration and offer the highest level of precision for tension-free adhesions



REF	m2SKYMDT	m2SKYMDB	m2SKYS22
Description	mini ² SKY MD Abutment titan	mini ² SKY MD Abutment BioXS	mini ² SKY Screw 1.6
Pieces	1	1	6
Height / mm	9.0	9.0	4.7
Material	Titan Grade 4	Peek-Classix™	Titan Grade 5
Platform	mini ² SKY	mini ² SKY	mini ² SKY
Screw	incl.	incl.	-
Prosthetic key	SKY-SD 25	SKY-SD 25	SKY-SD 25
Torque / Ncm	20	20	-
Prosthetic coping	PMMA	PMMA	-

Individual abutments – analogue and digital



- Individual abutments in the digital workflow with the mini²SKY scan abutment and the mini²SKY prefab titanium

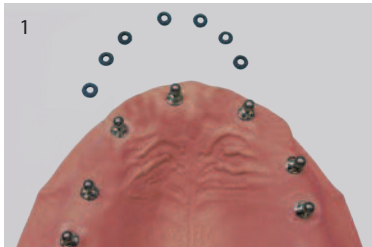
- Laboratory-manufactured individual abutments with mini²SKY uni.fit and model base
- Optimal aesthetics for the narrow gap



REF	m2KSCIE	m2SKYPFT	m2SKYUFA	UFCADMOD	m2SKYS22
Description	mini ² SKY Scan-Abutment intraoral / extraoral	mini ² SKY Prefab Titanium	mini ² SKY uni.fit Abutment	Modelling sleeve for uni.fit CAD Abutments	mini ² SKY Screw 1.6
Pieces	1	1	1	10	6
Height / mm	7.5	20.0	5.1	10	4.7
Material	Peek-Classix™	Titan Grade 4	Titan Grade 4	PMMA	Titan Grade 5
Platform	mini ² SKY	mini ² SKY	mini ² SKY	m2SKYUFA	mini ² SKY
Screw	incl.	incl.	incl.	-	-
Prosthetic key	SKY-SD 25	SKY-SD 25	SKY-SD 25	-	SKY-SD 25
Torque / Ncm	10	20	20	-	-

Impression and model manufacturing

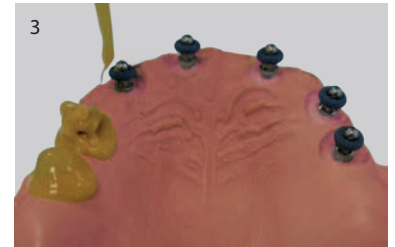
Impression and model manufacturing mini'SKY



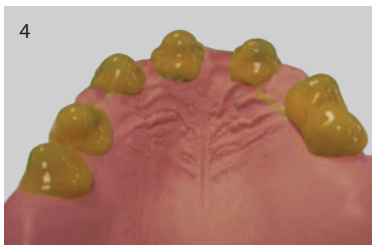
Initial situation



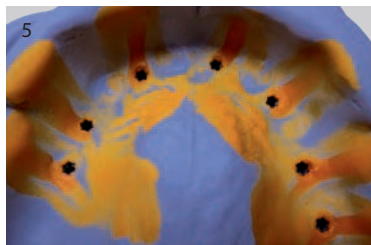
When making an impression of the mini'SKY implants, the o-ring (SKY-OR55) is placed over the ball head.



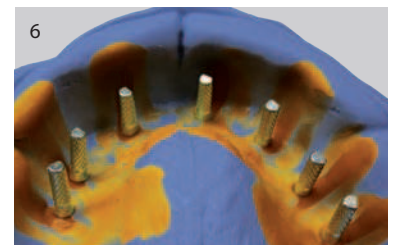
The torx of the mini'SKY implants and the o-rings is then fully molded using the impression material, brecision implant light (REF 580BL050).



At the same time, the impression material brecision implant heavy (REF 580BH380) is added to an impression tray and applied to the area being molded.



Once the impression material has cured, it is possible to carefully remove the impression tray. The o-rings remain in the impression. The torx of the mini'SKY implants is clearly recognizable and aids repositioning of the laboratory analog.



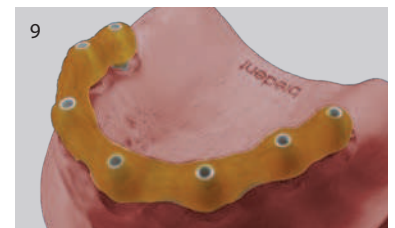
When repositioning the implant analog (m1SKYXIA), it is necessary to bear in mind that the torx geometry in the impression material corresponds with the orientation of the torx from the implant analog.



Using a gingival mask, Multisil-Mask hard (REF 54001134), the implant analog must be blocked, ensuring that the exact posi-



tion of the implant analog is maintained during model fabrication.



Control using a bridge framework has resulted in a high level of precision between the initial model and the model from the impression.



mini'SKY
Implant Analogue
REF m1SKYXIA



O-rings
6 pieces
REF SKY-OR55



2 x 50 ml Multisil-Mask soft
cartridges
27 pieces
REF 54001041


Impression and model manufacturing mini²SKY


The mini²SKY gingiva former completely covers the high precision torx and supports and ideally moulds the soft tissue.


In order to mould mini²SKY implants, the mini²SKY impression abutment open tray (m2SKYPA1) is screwed onto the implants and moulded according to the standard procedure for the open-tray technique.


In order to produce the master model, the mini²SKY implant analog (m2SKYXIA) is screwed to the mini²SKY impression abutment and the model is manufactured from super-hard stone.


Transgingival healing with a prefabricated or individual gingiva former spares the patient a second intervention.

 mini²SKY
Gingiva Former DH 3 mm
incl. Screw
REF m2SKYGF3

 mini²SKY
Gingiva Former 5 mm
incl. Screw
REF m2SKYGF5

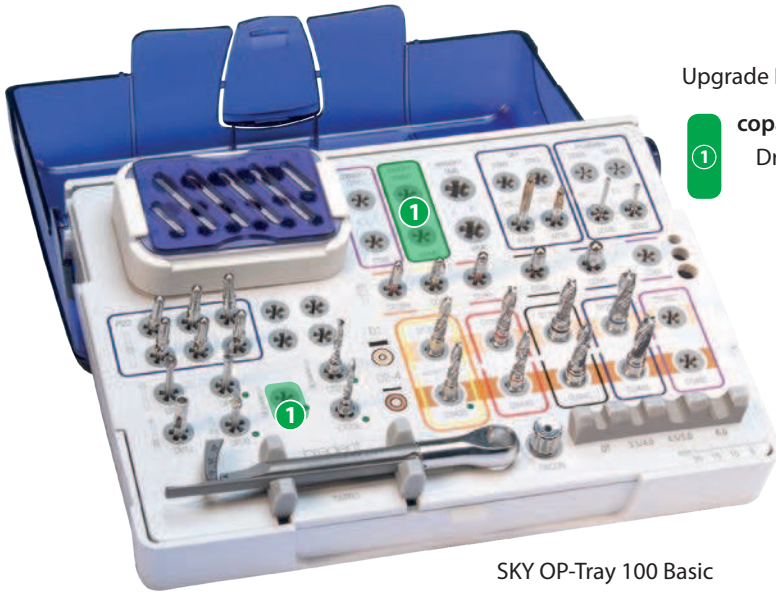
 mini²SKY
Implant Analogue
incl. Laboratory Screw
REF m2SKYXIA

 mini²SKY
Impression Abutment
open tray
incl. Screw
REF m2SKYPA1

 mini²SKY Laboratory Screw
10 pieces
REF m2SKYL22

 Qu-resin rosa
Assortment 14 pieces
1 cartridge 50 ml
1 Qu-connector 10 ml
12 mixing cannulas,
size 1, blue
REF 54001161

Instrument kit and component overview

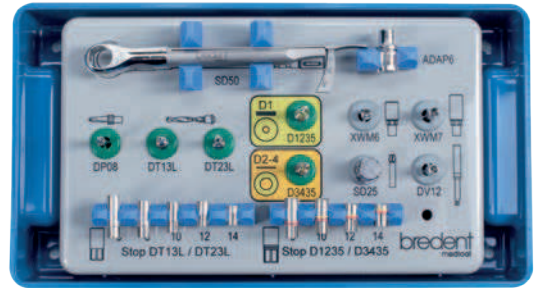


SKY OP-Tray 100 Basic
REF SKYOT10B

Upgrade Kits for the new SKY OP-Tray 100 Basic





copaSKY Upgrade Kit
Drills and instruments REF COPAUPGK





miniSKY OP-Tray
REF mSKYOT41



Drill Stops

		L 6 mm	L 8 mm	L 10 mm	L 12 mm	L 14 mm
Twistdrill		SKYXST06	SKYXST08	SKYXST10	SKYXST12	SKYXST14
Drill		–	SKYS0840	SKYS1040	SKYS1240	SKYS1440

Twistdrill rpm 800-1.000


Ø 1.3	Ø 2.25	long
		
SKYDT13L	SKYDT23L	

Drill for hard bone rpm 300

Ø 3.3	Ø 3.06
	
SKYD1235	SKYD3435

SKY Pilot Drill

long



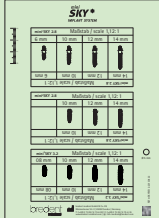
SKY-DP08

SKY Drill Extension



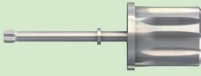
SKY-DV12

miniSKY X-ray-templates



Scale = 1:1	Scale = 1,12:1	Scale = 1,26:1
mSKYMS01	mSKYMS12	mSKYMS26

SKY Prosthetics Key



SKY-SD25

SKY Connector Pro (Adapter)



SKYTWCON

miniSKY Mounter for contra-angle

short



mSKYXWM6

miniSKY Mounter for contra-angle

long



mSKYXWM7

Torque Wrench Pro

10 to 40 Ncm



Locator® Abutment Driver for Torque Wrench 23 mm Latch




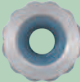





LOCZWED6

Locator® Instrument












LOCZINST




Prosthesis fixation for mini¹SKY

SKY Precious Metal Matrix	SKY Metal Housing with O-ring	SKY O-rings	mini ¹ SKY Implant Analogue	mini ¹ SKY BOX with SKY-OR50	SKY Precious Metal Matrix Activator	SKY Precious Metal Matrix Deactivator
						
SKYGM225	SKY-OR50	6 pieces SKY-OR55	m1SKYXIA	m1SKYBOX	SKYGMAKT	SKYGMDEA

Prosthesis fixation for mini²SKY

mini ² SKY retention.loc	Locator [®] Processing Set	mini ² SKY BOX with mini ² SKY retention.loc	mini ² SKY TiSi.snap	retention.sil Set	SKY Bone Bur	mini ² SKY BOX with mini ² SKY TiSi.snap		
								
m2SKYRL2	m2SKYRL4	2 Sets LOCLAB20	m2SKYBOXRL	m2SKTI02	m2SKTI04	580RTSET	SKY-DR41	m2SKYBOXTI

Prosthetic fixation with CAD/CAM manufactured bar on mini²SKY

mini ² SKY Scan-Abutment	mini ² SKY Schraube	mini ² SKY 0° parallelization tool
		
m2SKSCIE	6 pieces m2SKYS22	mSKYpara

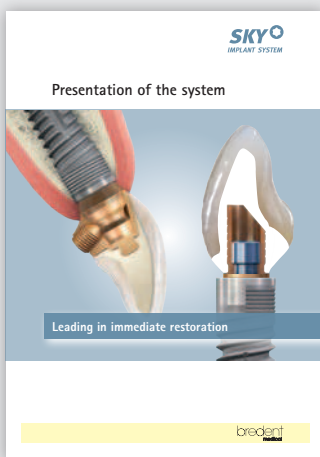
Restoration of narrow single-tooth gaps with mini²SKY

mini ² SKY MD-Abutment Titan	mini ² SKY MD-Abutment BioXS	mini ² SKY uni.fit Abutment	Modelling Sleeve	mini ² SKY Scan-Abutment	mini ² SKY Prefab Titanium
					
m2SKYMDT	m2SKYMDB	m2SKYUFA	10 pieces UFCADMOD	m2SKSCIE	m2SKYPFS

Impression abutments, laboratory analogues, gingiva former and screws for mini²SKY

mini ² SKY Im-pression Abutment	mini ² SKY Implant Analogue	mini ² SKY Gingiva Former	mini ² SKY Screw	mini ² SKY Laboratory Screw	
					
m2SKYPA1	m2SKYXIA	m2SKYGF3	m2SKYGF5	6 pieces m2SKYS22	10 pieces m2SKYL22

Other offers that may be of interest



SKY Presentation of the system
REF 000250GB



mini¹SKY BOX
with SKY-OR50
REF m1SKYBOX



mini²SKY BOX
with mini²SKY retention.loc
REF m2SKYBOXRL



mini²SKY BOX
with mini²SKY TiSi.snap
REF m2SKYBOXTI

009910GB-20190103 Mistake and subject to change reserved

