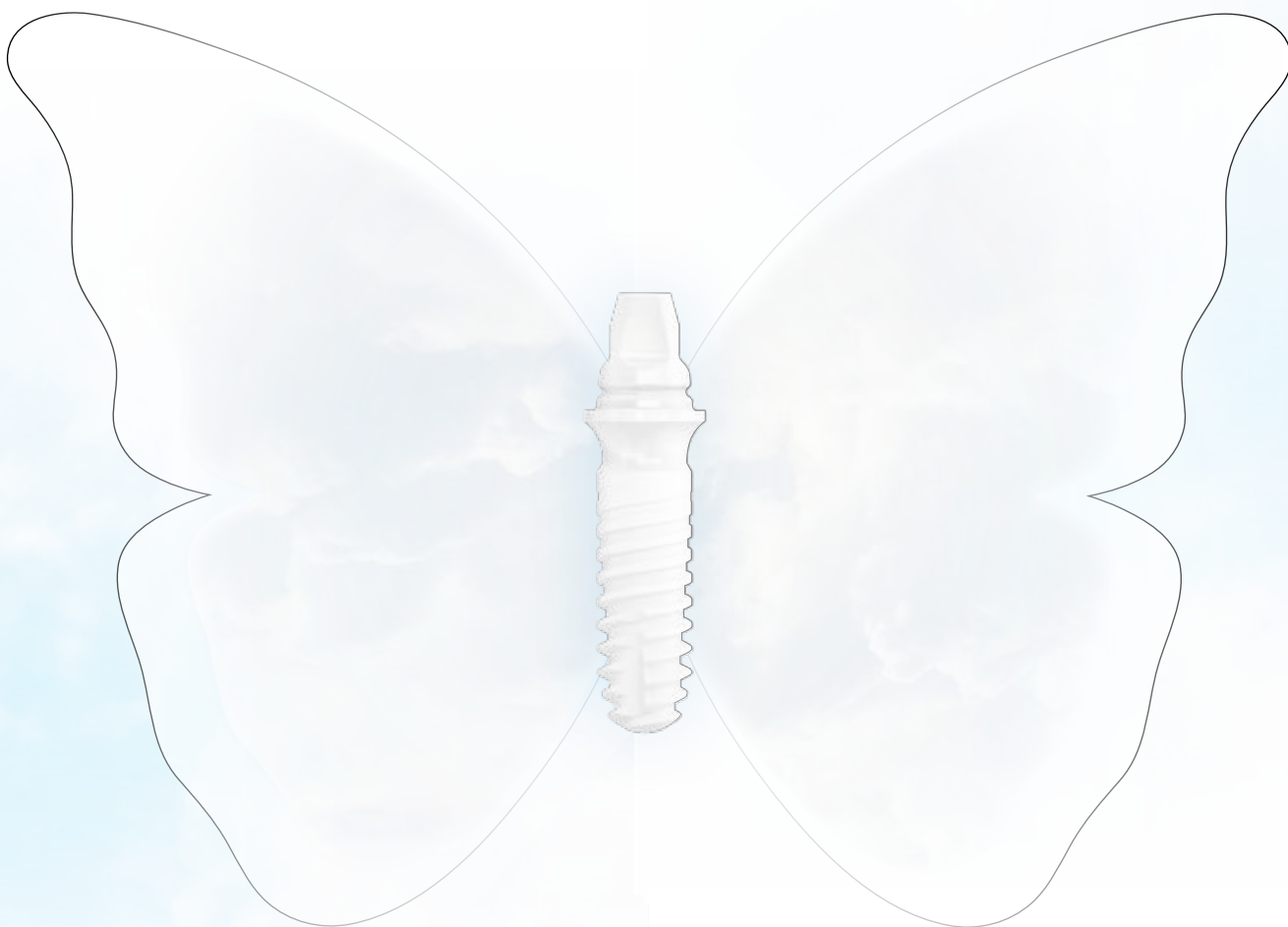


whiteSKY **Tissue Line**

Zirconia implant







white
SKY

TISSUE LINE

*Reshaping
scientific
SUCCESS*

The whiteSKY implant system has been clinically and scientifically proven since its introduction in 2006. Scientifically sound and long-term published results spanning more than 10 years speak for its success. These findings prove that whiteSKY zirconia implants can achieve results which are comparable to those achieved with titanium implants. The second generation whiteSKY T.L. (Tissue Line) now incorporates all the benefits of the "classic" whiteSKY in a modern and enhanced design: "Scientific success – in a new form".



Studies have also investigated and demonstrated osseointegration and integration in peri-implant soft tissue. Particular emphasis was placed on the attachment of the peri-implant soft tissue to the implant surface.¹⁾

These histological observations are also confirmed in clinical use. They are attributable to the material and an ideal surface roughness.

The long-term results in terms of bone stability, pink-white aesthetics and survival rate are conclusive.²⁾

Thus, whiteSKY T.L. represents the highest standards of aesthetics, safety and functionality, inheriting all the time-tested features of its predecessor.

¹⁾ Stadlinger B. et al.: Comparison of zirconia and titanium implants after a short healing period. A pilot study in minipigs; International Journal of Oral Maxillofacial Surgery 2010; 39; 585-592.

²⁾ Amberger E. et al. Long-term results of one-piece zirconia implants for single-tooth restoration; Pip 2018, 2, pp. 12-16.

white
SKY } **TL.**
ZIRCONIA } IMPLANT

breident
medical

whiteSKY Tissue Line

One piece
Versatile
Reliable

Proven manufacturing process
and therapy

The elaborate production from compressed zirconia and the one-piece design are continued in the whiteSKY T.L. This gives the whiteSKY T.L. implants very high stability, a key factor for long-term success.

The blasted surface, combined with the bone-quality oriented surgical protocol, produces high primary stability in all bone qualities. This high primary stability is the basic prerequisite for immediate restoration with whiteSKY T.L. zirconia implants.

The benefits

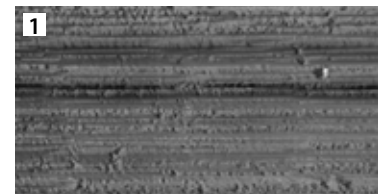
The positive and multifaceted characteristics of the whiteSKY T.L. zirconia implant.

The stable nature

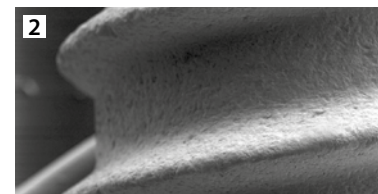
The legacy of the whiteSKY success story.

- Conical cylindrical implant shape
- Self-tapping double thread
- Compression thread
(bone quality = primary stability)
- Finely structured sandblasted surface
→ provides the optimal basis for the accumulation of bone cells
(see right, Figures 2 and 3)
- Implant shoulder with horizontal microgrooves → perfect gingiva positioning, since the structure of the microgrooves is similar to the natural gingiva
(see right, Fig. 1)

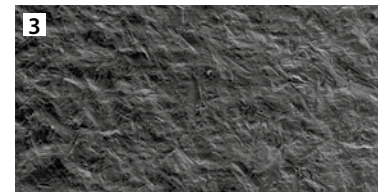
Macromounting | whiteSKY surface



Implant shoulder with horizontal microgrooves



Microstructure in the µm range for rapid bone adaptation



R_q: 0.9 – 1.0 µm
R_a: 7.0 – 7.2 µm
R_z: 6.05 – 6.15 µm

One level higher

The further development of the whiteSKY zirconia implant into a whiteSKY Tissue Line.

Two angled surfaces, each 15°

→ less individualisation required for the restoration of angled implants

Customisable

→ if required

Groove

→ fixation of prosthetics - "Cement lock"

Concave-shaped collar/shaped shoulder

→ space for cosmetic forming of soft tissue

Optimised self-tapping thread

→ reduced force required for screwing in

Optimised bonding surfaces

Optimised setup height (4.5 mm)

→ less customisation required

Optimised surface structure

→ for soft tissue attachment
(see left, Fig. 1)

Rough surface

→ for reliable osseointegration
(see left, Fig. 3)

Rectangular attachment connection

→ anti-rotation device

Your decision

You have the choice:
Digital or analogue workflow.



- Prosthetic cap
(= scan cap: digital impression)
for efficient single tooth and
bridge restoration



- Laboratory-analogue
→ simplifies restoration
if the implant has not been
individualised



whiteSKY Tissue Line

Testimonials

'The design of the new whiteSKY Tissue Line implants stands out in particular because they are perfectly matched to biologics.'

- Dr. Luis Lapa Bessa -



Dr. Luis Lapa Bessa
Portugal



Dr. Claude Gallizia
Aubagne, France

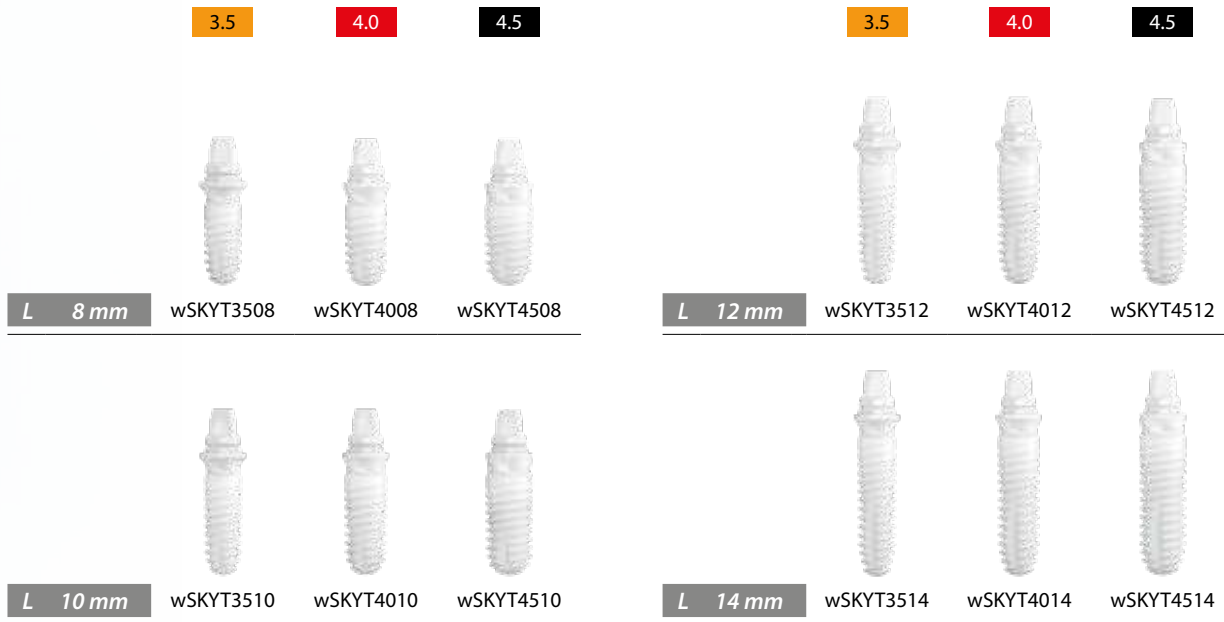
With the new whiteSKY Tissue Line implants, I have a very good feeling when screwing in the implants, as they have optimum primary stability. Thanks to the optimised abutment height of the new implants, the customisation process is much easier and faster for me! I am also pleased with the new design of the white insertion instrument that comes in the packaging: Easy handling and superior aesthetics! An all-round successful implant system.



Dr. Andrea Borgonovo
Milan, Italy

The peculiar design with flat platform and concave shoulder of the new whiteSKY Tissue Line implant could be an important help for clinicians to improve soft tissue and prosthetic stability.

whiteSKY zirconia implants

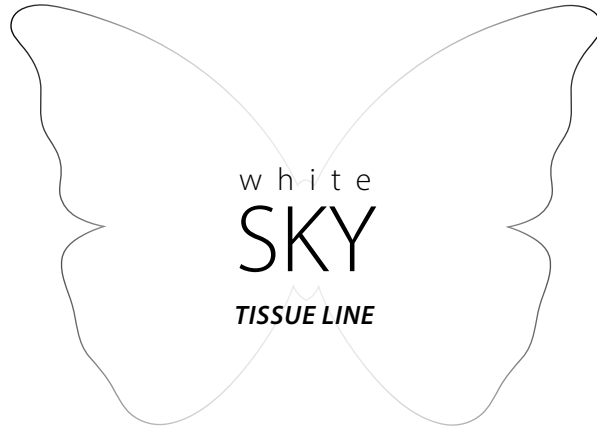


Accessories



Illustrations not to scale.





Orders are subject to the General Terms and Conditions of bredent medical GmbH & Co. KG: <https://www.bredent-implants.com/de/allgemeine-geschaeftsbedingungen-agb/>
Illustrations not to scale. All prices in € plus VAT, plus shipping if applicable.



0091057GB-20210409 Subject to amendment or correction

DENTAL INNOVATIONS
SINCE 1974

bredent
group

bredent medical GmbH & Co. KG · Weissenhorner Str. 2 · 89250 Senden · Germany · T: +49 7309 872-441 · F: +49 7309 872-444 · www.bredent-medical.com · @: info-medical@bredent.com