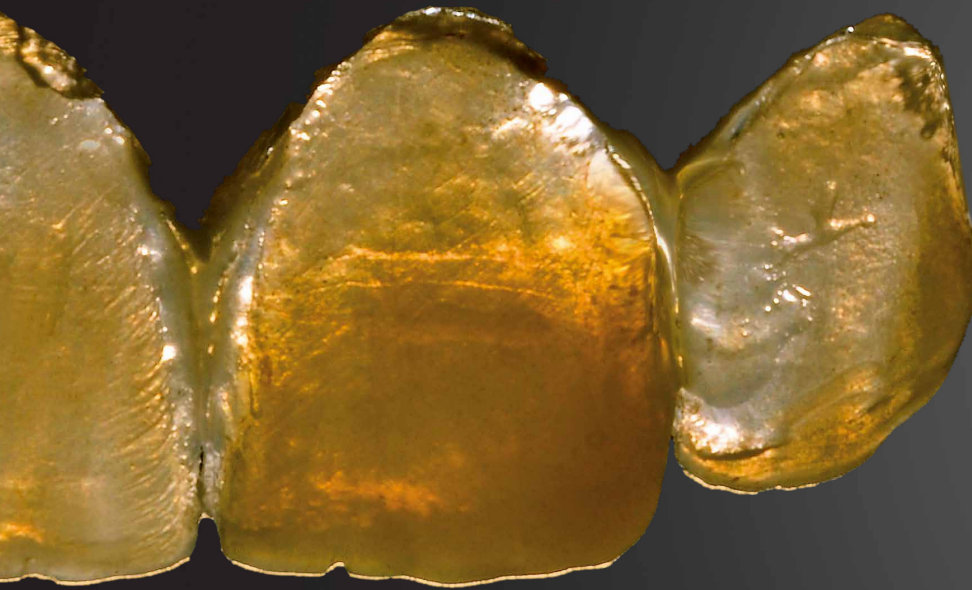


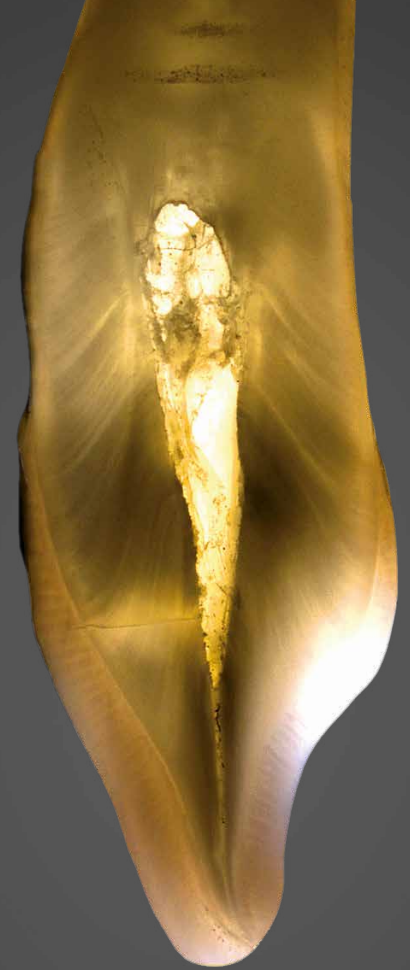
# crea.lign

Veneering composite



*Opalescence of crea.lign*

Dr. Vincenzo Musella, Modena, Italy



*Opalescence of natural tooth*



create natural beauty

powered by  
**visio.lign**

## visio.lign

The aesthetic and functional system with unique material options, helping you to create natural beauty, function and physiology. The open system provides flexibility and freedom thanks to six components designed to compliment one another; crea.lign, novo.lign, neo.lign, visio.CAM, visio.paint & bond.lign.

The combination of these components allows a variety of workflows and implant prosthetic solutions, each with perfect results.

visio.lign – the system for stability and reliability. The result: durable prosthetic restorations featuring colour stability and superior load capacity.

The secret of

**crea.lign**



“*Natural opalescence*”

Discover the fascination of  
the crea.lign veneering composites

4

**crea.lign –  
The light-curing ceramic composite  
for natural beauty**



Photo: © 2016 "Zirconia substructure veneered with crea.lign"

A custom-made restoration by Bettina Wilson (Dental Technician), bredent GmbH & Co. KG



1. crea.lign veneering composite for permanent veneering of metal, ceramic and polymer substructures.  
The exceptional material properties adapt elasticity and hardness of crea.lign to the various substructure materials. crea.lign contains only nano particles and no ground glass filler. It consists of 50 % opalescent ceramic filler and a high-strength oligomer matrix.
2. The omission of hard glass fillers results in optimised resistance to plaque and abrasion and prevents embrittlement of the material.
3. Agglomeration effects (lumping) in the material are avoided and a homogeneous and dense surface is achieved with a particle size of approx. 40  $\mu\text{m}$ .
4. The crea.lign veneering composite is available as a gel and a paste.  
Thanks to the flowability of crea.lign improved masking and gap-free transitions to the veneer is achieved.

## Take advantage of the benefits of crea.lign

### A. Natural beauty

- Natural opalescence
- Outstanding effect of depth thanks to specific refractive indices
- Translucency (more options than in ceramics)
- Design and layer structure according to natural teeth
- **Red-white aesthetics in 1 system:**  
Matched crea.lign materials for individualising teeth and gingiva
- **Classic range of shades** (A-D and Bleach) and additional **Enamel/Incisal** and **GUM** materials and a transparent crea.lign Gel (Transpa Clear)

### B. Physiology

- Clearly higher impact strength than ceramic (protects the antagonist by reducing the occlusal force)
- Abrasion values comparable to those of natural teeth
- Simple and fast reconstruction of the gingiva for all implant-prosthetic restorations

### C. Reliability

- Chemical bonding to all substructure materials
- Result immediately visible:  
"What you see is what you get"
- Shade stability and plaque resistance thanks to excellent polishing properties and minimal water absorption
- Optimised for implant-prosthetic restorations

## Range of applications

### Freestyle layering

- **Standard aesthetics**
- **High-end aesthetics**
- **Red aesthetics**
- **Light-up modelling**

1

→ see pages 8 to 11

### Individualising

- **Red-White aesthetics**  
Cut-back & individualisation
- **CDL by**  
MDT Christian Dalla Libera

2

→ see pages 12 to 15

### Guided layering

- **visio.lign technique**  
Completion of the novo.lign veneers
- **TTT**  
Table Top Template
- **CGS by ZTM Andrea Foschi**
- **ILT by Dr. Vincenzo Musella**

3

→ see pages 16 to 19

## Benefits for the dental practice

### D. Intraoral application

- Approved for oral use: for intraoral application
- Repair of chipping for all veneering materials
- Transition areas toward repairs not visible
- "What you see is what you get": Result is immediately visible and can be adapted
- Adjustments without loss in quality during try-in
- Result on the level of supra ceramics



Repair of chipping

4

Photo: 2016 "Opalescence of natural tooth"

→ see pages 22 to 23

## Standard aesthetics

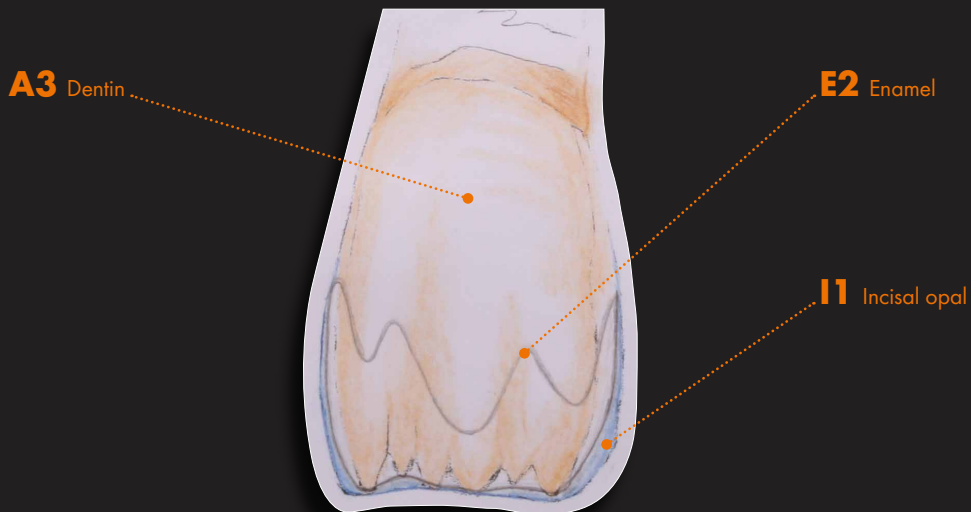
"Simple"



Achieve outstanding results quickly and easily using just three crea.lign materials.

Shade matching with the shade tab confirms: crea.lign enables almost perfect reproduction of the tooth shade with three materials only.

## Standard layering





## High-end aesthetics

"Accurate in every detail"

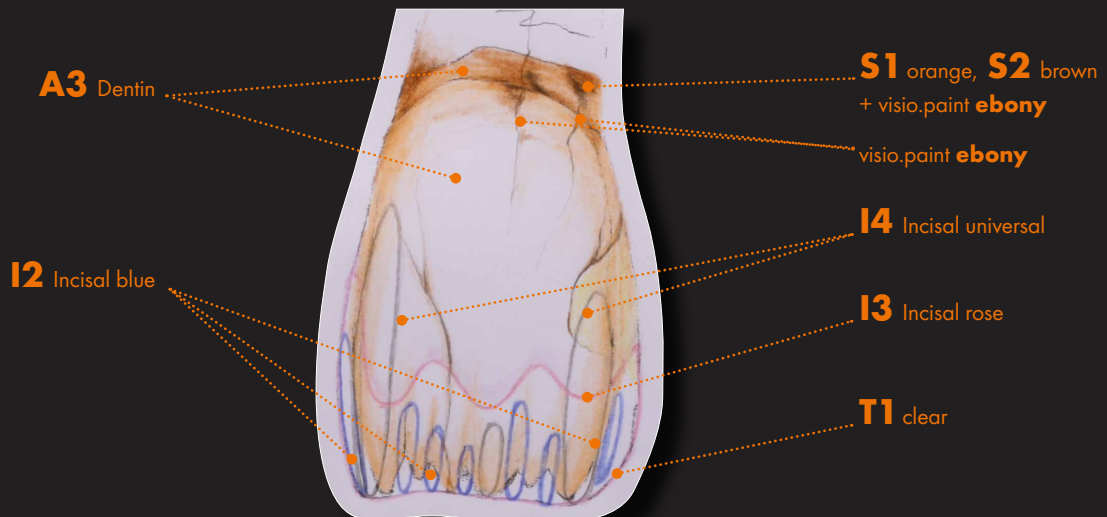


Reproducing the variety of individual characteristics of the tooth with only seven different crea.lign shades.

Natural tooth or crea.lign?

The original can hardly be distinguished from the reproduction. Perfect reproduction of the natural tooth thanks to natural opalescence, translucency and specific refractive indices of the crea.lign material. Design, layer structure and effect of depth based on natural teeth.

## Distinctive individual layering



Red aesthetics

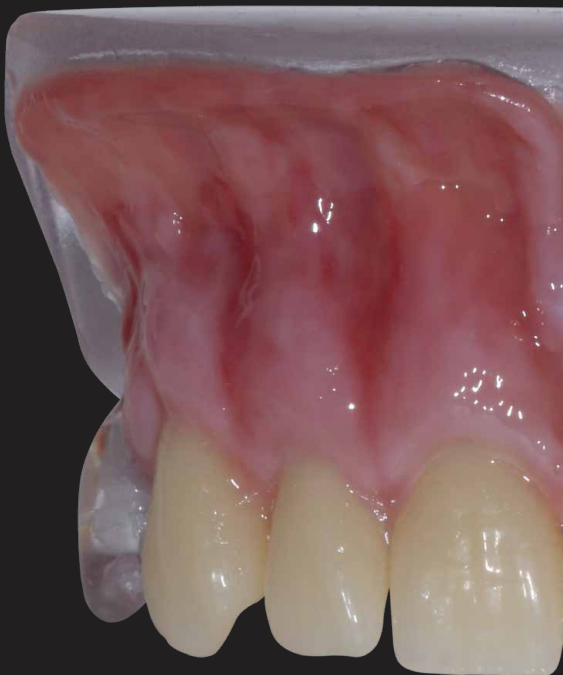
"Vivid"



Layering with  
**crea.lign Gel**



Layering with  
**crea.lign Paste**



## Light-up modelling

“Efficient”



Simplify the application of layers by briefly curing the crea.lign materials using the small hand lamp.



### CONVENIENT!

The small hand lamp is integrated in the crea.lign syringe and can be removed if required.



## Red-White aesthetics

### Cut-back & individualising



neo.lign denture teeth set up (design I45). 21 was customised in advance.



Cut-back of neo.lign denture teeth (11 & 22). Then individualising is carried out using the crea.lign materials: I1 opal, I2 blue, BL3 bleach, T1 clear, stain white.



After the full row of teeth has been customised, the gingiva is built up using crea.lign materials Dentin A2, G1 light and G3 pink.

“ *Individualisation with  
crea.lign for a truly  
natural result* ”

**crea.lign**



Completed restoration: neo.lign denture teeth (design I45) individualised with crea.lign and individualised gingiva.

## CDL - Creative Dynamic Layering

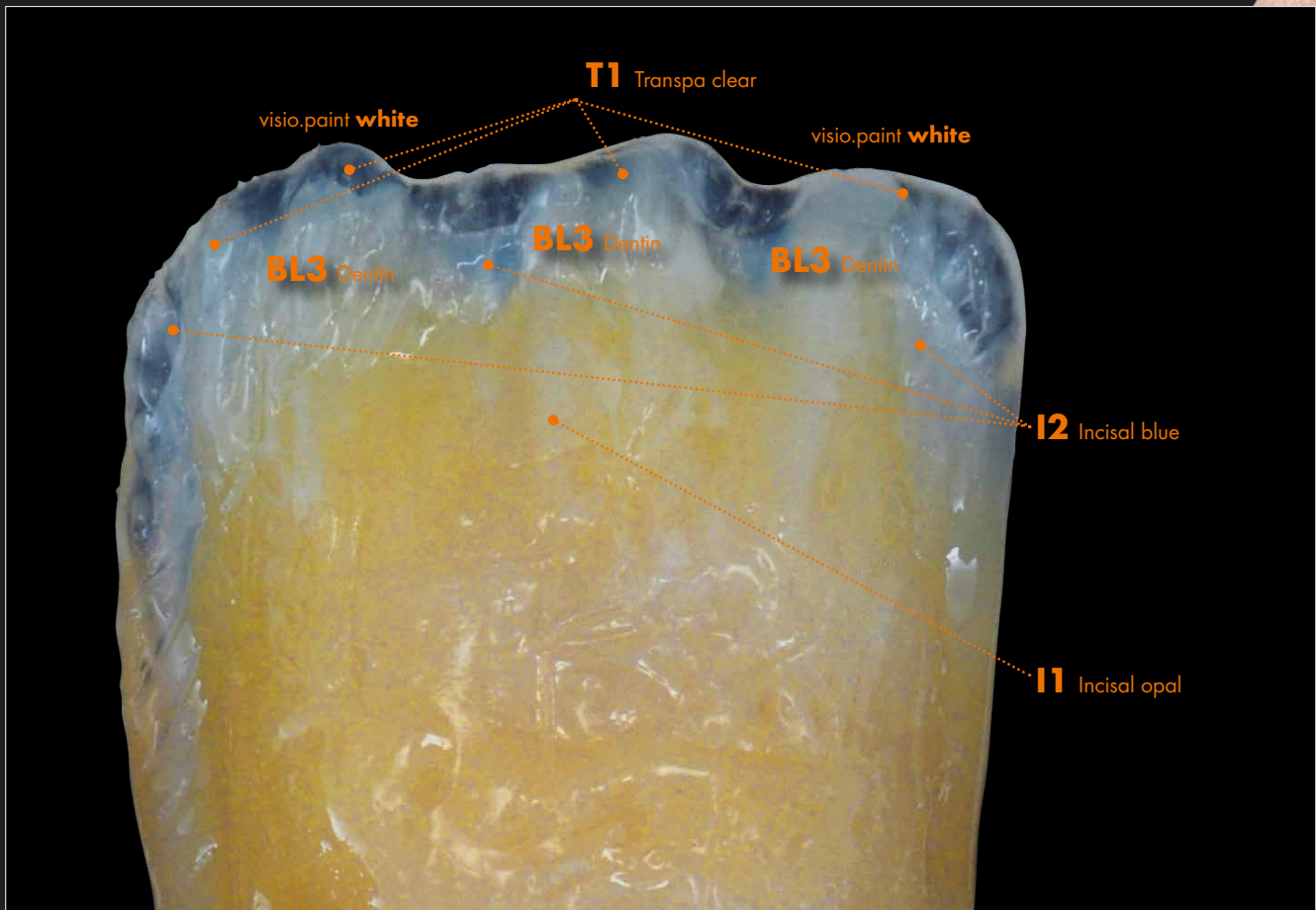
by MDT Christian Dalla Libera



Natural effect of depth,  
simple and reliable – thanks  
to effective layering and  
staining technique

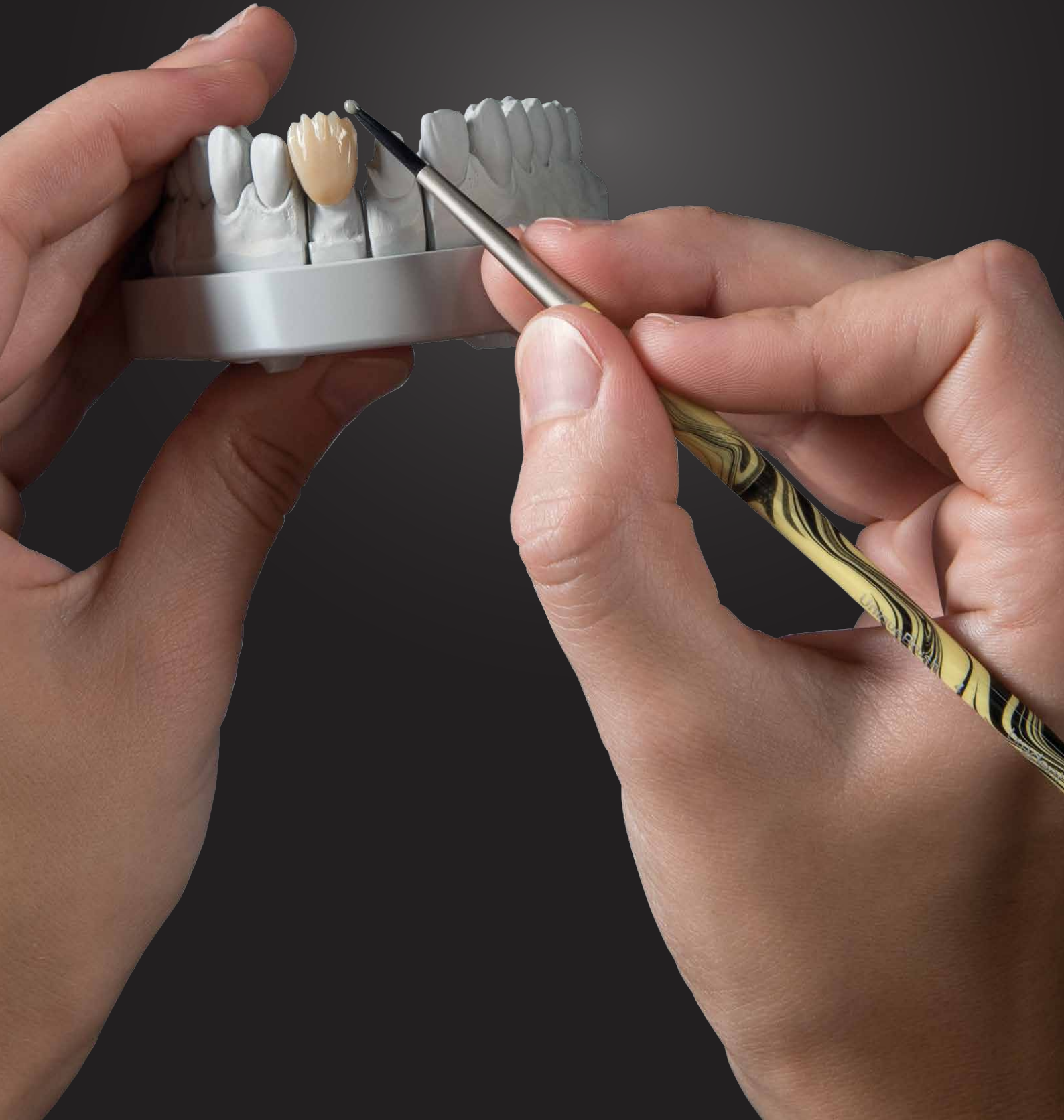
### Benefits of CDL

- Natural effect of depth achieved with minimal effort
- Reliable creation of effects with the crea.lign product range
- Individualisation techniques for red-white aesthetics



“ *Freestyle layering & individualising* ”

**crea.lign**



## visio.lign technique

Building up the  
novo.lign veneers



crea.lign is applied to the basal surface of the bridge unit and polymerised.



Final polymerisation of the built up novo.lign veneers in the bre.lux Power Unit 2 light-curing device.



The finished veneers consisting of novo.lign veneers and crea.lign composite.

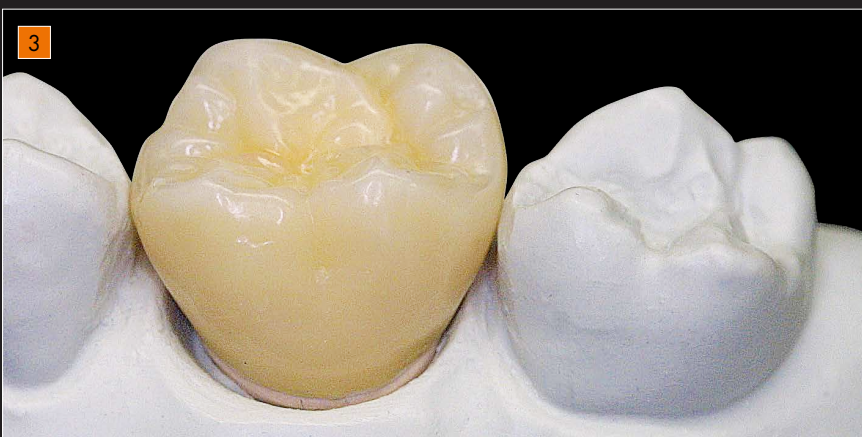


**TTT****Table Top Template - Gnathoflex**  
"Simple fabrication of occlusal surfaces"

Anatomical occlusal surfaces can be quickly and easily fabricated with the highly flexible Gnathoflex silicone moulds. For this purpose, crea.lign materials are filled into the mould and polymerised.



The polymerised occlusal surface is fixed on the coping and the elastic Gnathoflex mould is removed.



The tooth shape is built up with the crea.lign materials.

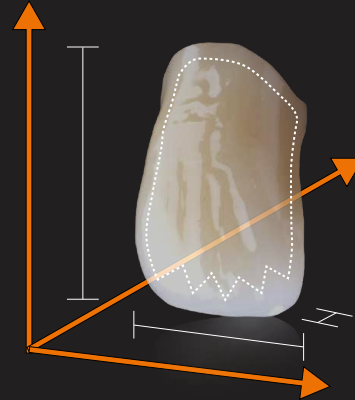
## CGS – Customised Guided System

by MDT Andrea Foschi



*Foschi*

Reliable individual layering in all dimensions



### Benefits of CGS

- Accurate reproduction of the tooth shape, function and the aesthetic set-up (preview)
- Reliable reproduction of the shade by guided layering
- Veneer or denture tooth in the preview are part of the completed restoration



Functional set-up with the neo.lign denture teeth. Impression of the silicone key: palatal, occlusal and vestibular.



Cut-back of the neo.lign denture teeth.



Individualisation by applying the crea.lign material. The matrices that were previously removed are held repeatedly against the restoration to verify and ensure the shape and proper function.



The completed restoration.

Photos of CGS:

© 2016 by MDT Andrea Foschi, Ravenna, Italy

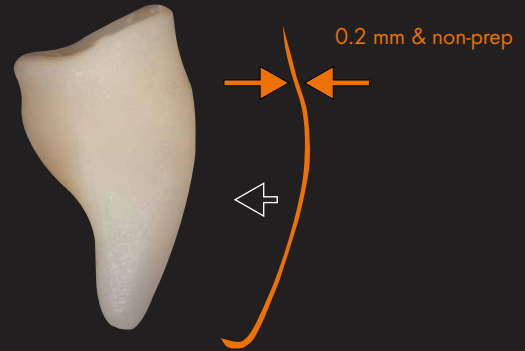
# ILT – Inverse Layering Technique

by Dr. Vincenzo Musella



*Musella*

Extremely thin,  
individually layered  
non-prep veneers



## Benefits of ILT

- Small volume:  
ideal for occlusal ("Table Tops") and  
aesthetic anterior veneers.
- reduced polishing:  
thanks to the smooth surface of the matrix, a single polishing step  
is sufficient to achieve high gloss

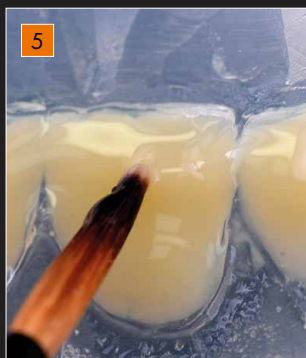


Initial situation of the patient.



2. Model of the initial situation.

3. Modelling in wax.



The various crea.lign materials are applied (inverse layering) in the matrix.




Veneers in situ after permanent bonding.



Photo:

© 2016 by MDT Philipp von der Osten, Erlangen, Germany



“ *crea.lign veneering composite*  
- for perfect harmony of  
*red-white aesthetics.* ”

**crea.lign**

## Intraoral, permanent repairs on the “level of supra ceramics”



Frequent chipping of ceramic veneers

After repairing with crea.lign composite

### Intraoral application

- Approved for oral use: for intraoral application
- Repair of chipping of all veneering materials
- “What you see is what you get”: Result is immediately visible and adaptable
- Firing in the furnace is not required
- Fast repair in situ: direct and simple

### Permanent repair without loss in quality

- Material is approved for permanent repairs
- Uncompromised aesthetics: no differences in the shade and “repair transitions” can be recognised
- No deterioration of mechanical properties
- The result is on the level of supra ceramics

## The Chipping Repair Kit

Chipping cases easily and simply repaired

- Primer can be used in combination with all prosthetic materials
- crea.lign Incisal and Dentin materials (in A2 and A3 for masking 80 % of all cases)
- Just one Chipping Repair Kit for 100 treatments
- No hydrofluoric acid required

Chipping Repair Kit for dentists

### REF CLIGNSETA:

includes crea.lign composites in the shades A2/A3 including 4 primers and consumables.





## crea.lign Gel

### Dentin



Gel

- |      |    |    |    |
|------|----|----|----|
| A1   | A4 | B4 | C4 |
| A2   | B1 | C1 | D2 |
| A3   | B2 | C2 | D3 |
| A3,5 | B3 | C3 | D4 |

BL3

### GUM



Gel

- |          |         |
|----------|---------|
| G1 light | G4 red  |
| G2 rosa  | M4 lila |
| G3 pink  |         |

### Transpa Clear



Gel

T1 clear

### Enamel & Incisal



Gel

- |    |              |
|----|--------------|
| E1 | I1 opal      |
| E2 | I2 blue      |
| E3 | I3 rose      |
| E4 | I4 universal |

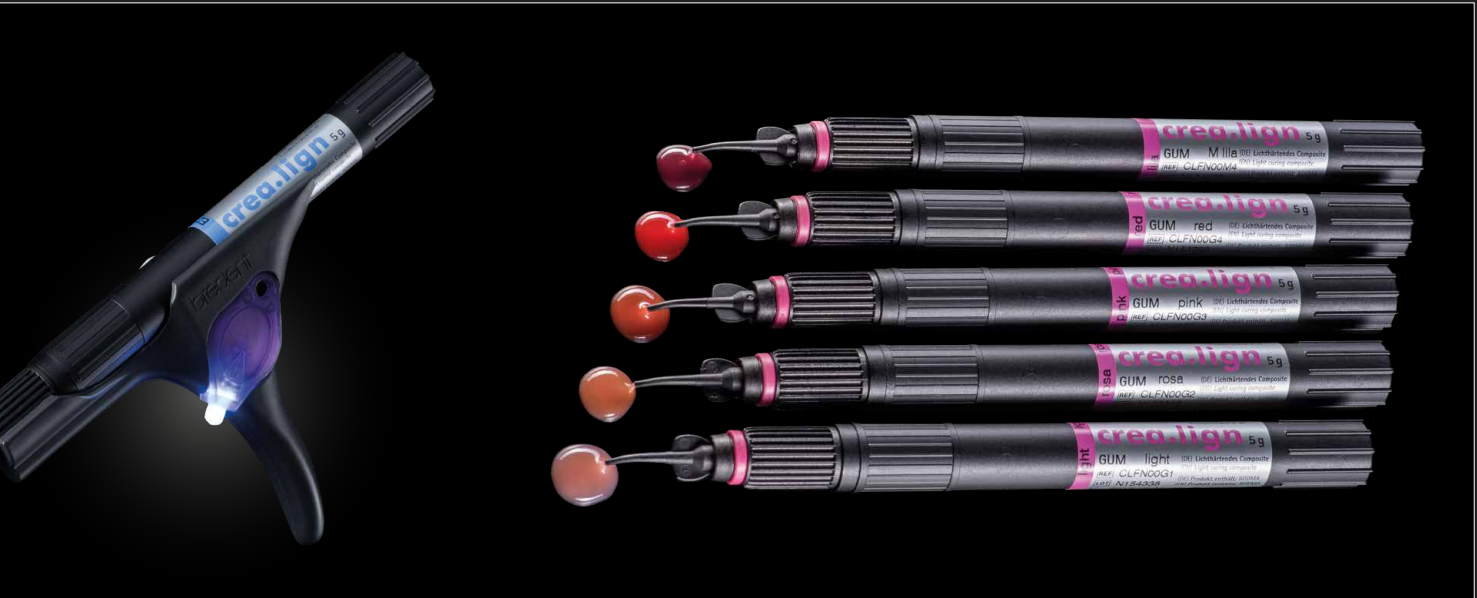
### Modifier



Gel

- |          |            |
|----------|------------|
| M1 beige | M3 caramel |
| M2 olive | M5 umbra   |



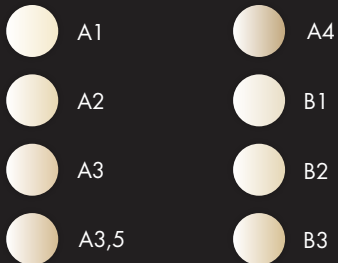


## crea.lign Paste

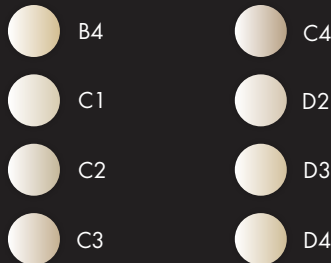
### Dentin



Paste



BL3



### GUM



Paste



## crea.lign Stains



## crea.lign Modelling liquid



The flowability of crea.lign Paste and Gel can be increased with crea.lign Modelling Liquid.

**⚠** When mixed with crea.lign, the proportion of Mixing Liquid must not exceed 30 %.



## crea.lign freestyle complete set

115 pcs., aluminium case

*"The complete solution for professionals"*

Freestyle layering on PM/NPM, ceramic, zirconia, PMMA, novo.lign veneers and neo.lign denture teeth as well as high-performance polymers, such as BioHPP and CAD/CAM materials, such as visio.CAM.

The complete set includes all available shades of the crea.lign opaque, paste, gel and stains as well as visio.paint and the bond.lign primers/bonders.

REF CLIGNSETFK





## Red-White aesthetic set

19 pcs.

*"All you need for the gingiva"*

Use the crea.lign GUM materials in the visio.lign system to individualise your dentures to achieve high-end aesthetics. Offer your customers this individualisation service and increase the profitability of your laboratory. Use your dentures to improve the reputation of your laboratory.

REF CLIGNSETG





# Testin

create natural beauty

“ *The consistency of crea.lign allows optimal use of the “Inverse Layering” technique since I am able to spread the various materials very precisely. Both the transitions in the finishing stage and polishing can be completed very easily thanks to the materials compactness and homogeneity, which ensures aesthetic, predictable and durable results.* ”



**Dr. Vincenzo Musella**

“ *The crea.lign Gel GUM veneering material takes the benefits of substructures made of high-performance polymers to the next level. Feeling in the mouth, appearance and durability are a unique combination.* ”



**MDT Philipp von der Osten**

# monials

“ *The perfect interaction of the neo.lign denture teeth and the crea.lign veneering composite enables individual, three-dimensional and dynamic layering in red-white aesthetics - for a lasting and harmonious smile of the patient.* ”



**MDT Christian Dalla Libera**

“ *After a long search I have finally found a composite that does not only provide ceramic-like properties, such as durability and translucency, but also excels with its natural opalescence. After I discovered crea.lign, I hardly see any reason to use ceramics.* ”



**MDT Andrea Foschi**

# visio.lign

## The Aesthetic and Functional system

### Overview of visio.lign media



REF 000651GB

#### crea.lign

##### Red-White Aesthetic

Learn more about the possibilities of crea.lign in red-white aesthetics.



REF 000590GB

#### bre.Lux

##### PowerUnit 2

The LED light-curing device is optimised for processing crea.lign - a short summary of the most relevant information.



REF 000305GB

#### neo.lign

##### Denture teeth

Design and function of the neo.lign denture teeth will fascinate you. Discover the variety of teeth and select your favourite design.



**crea.lign** - veneering composite

The light-curing composite features impressive natural opalescence and unparalleled light transmission for natural beauty.



**novo.lign** - veneers

The novo.lign veneers feature an extended neck and a natural depth thanks to the morphological layer structure. The gold standard in implant prosthetics.



**visio.CAM** - composite blanks

The material benefits from the visio.lign system is also available for CAD/CAM processing. The blanks from the visio.CAM line are compatible with the entire visio.lign system.



**neo.lign** - denture teeth

The neo.lign denture teeth feature the same shades, designs and materials as the novo.lign veneers – optimised for fixed/removable restorations.



**bond.lign** - primer/bonder

The primer/bonder system for a permanent and secure chemical adhesive bond between all system components and common framework materials – including BioHPP (PEEK).



**visio.paint** - stains

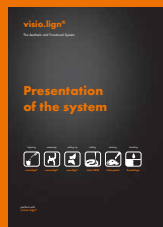
The visio.paint stains enable fast and simple individualisation of veneers.



visio.lign  
Info folder

The most relevant materials for the visio.lign system in a handy info folder.

REF 000274GB



visio.lign  
Presentation  
of the system

A compact summary of the variety of products of the visio.lign system.

REF 009504GB



visio.lign  
Manual

Step-by-step instructions of the various processing techniques and possibilities of the visio.lign system.

REF 000234GB

**crea.lign**

Veneering composite



create natural beauty

**bredent**  
group

000577GB-20210520  
Subject to errors and changes

